

OCAM

4X4
ACCESSORIES

INSTALLATION INSTRUCTIONS

PART NUMBER: SSE2-F-TRUCK

APPLICATION: F150

FITTING TIME: 4 hours



OCAM 4x4 Accessories
31 Shirley Way, Epping, VIC 3076
Telephone (03) 9357-0306
Email: hello@ocam.com.au
ABN: 33166112278

IMPORTANT INFORMATION

- Always wear safety glasses and hearing protection.
- Make sure work area is kept clean at all times.
- Check that all components, as listed, are present.
- Thoroughly read all instructions.
- This product or its fasteners must not be modified in any way.
- These instructions are accurate as at the revision date and do not take into account any changes made by the vehicle manufacturer to vehicle design after the revision date, or other accessories that are or have been fitted to the vehicle.
- It is the responsibility of the installer to confirm correct operation/clearance of all components.
- All holes drilled must have all burrs and swarf removed then coated with a suitable rust preventative paint.
- Ensure that all hardware is fastened to torque list as detailed in these instructions.
- On completion of the job, these instructions are to be given to the customer.

PRODUCT CARE

- To maintain the appearance of the product, wash and dry regularly using a quality car wash.
- The product should be periodically checked for tightness.

Torque Settings		
BOLT SIZE mm	TORQUE Nm	TORQUE ft.lb
M5	5	4
M6	9	7
M8	22	16
M10	44	32
M12	77	57

Tools Required

1. Socket set
2. Electric tape
3. Trim removal tool
4. Pliers

COMPONENTS LIST



ECU



Motor bracket
2 pcs



Idler brackets
4 pcs



OBD kit ,1 pc



Wiring



Plastic
Line, 1 pc



N6*25 sock-
et cap
screw ,12 pcs



M8 big flat
gasket ,
18pcs



M6 spring
washer,
12pcs



U shape
washer,
10 pcs



M8 nut,
18pcs



Boards 2pcs



Tie wire 20 pcs

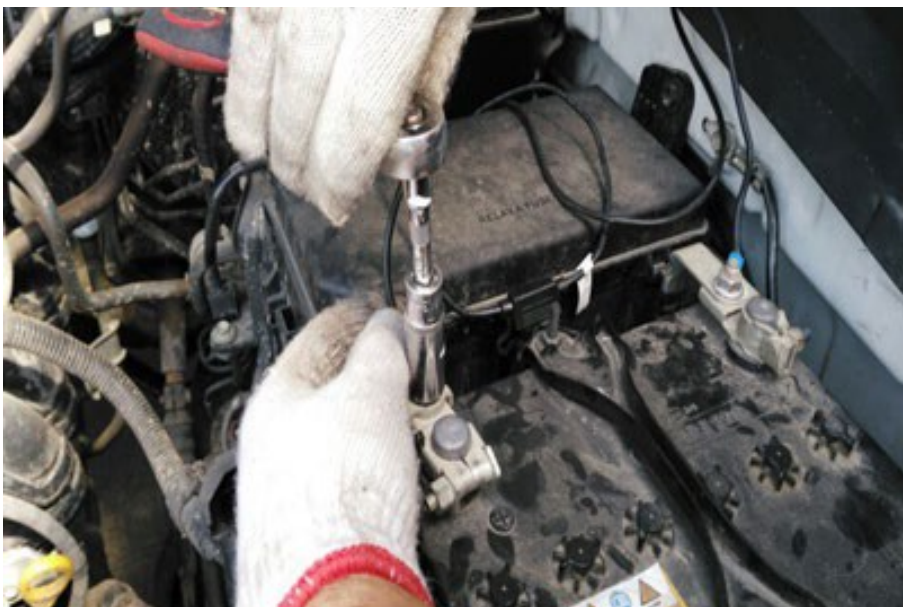
1. Install ECU, OBD & Wiring



1. Take out fuse



2. Connect positive pole of a battery



3. Connect positive pole of a battery
CAUTION!: Tighten battery screw very tight! If loose, may get damage to the car.



4. Connect the positive pole wiring to the engine room



5. Connect the positive pole wiring to the engine room



6. Fix the ECU behind the foot brake



7. Fix the ECU with M6 screw



8. Fix the negative on the left side of the foot brake



9. Lift off the carpet and find the wiring hole



10. Connect the left side motor wiring to chassis; the right side is same as the left



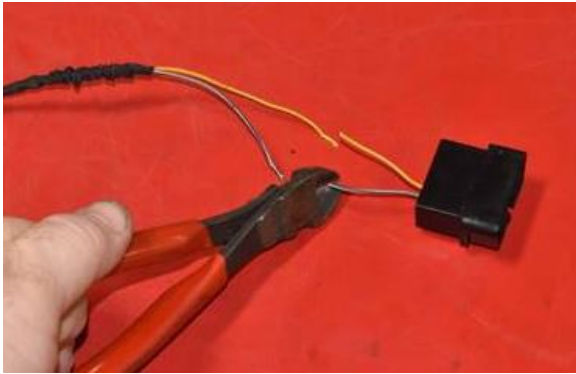
11. Insert our OBD on the original OBD



12. Connect the ight motor wiring to the right side

13. Use tape to protect all plugs, insert ECU, connect OBD line with ECU connector, insert fuse to test if motor work well

Regarding 2021+ version, OBD connector not work. Please follow below step to get information:



1) Cut signal wiring



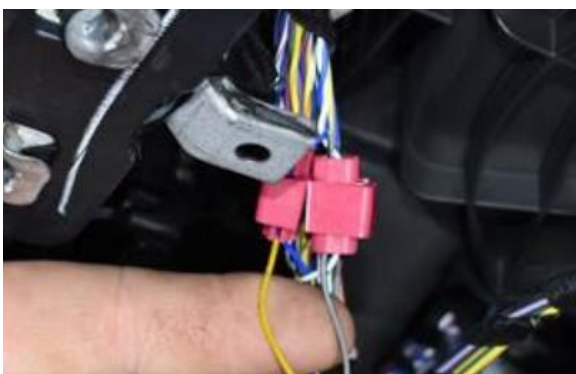
2) Take off the plate under passenger position.



3) Locate wiring at right upper position



4) Find blue and white twisted lines

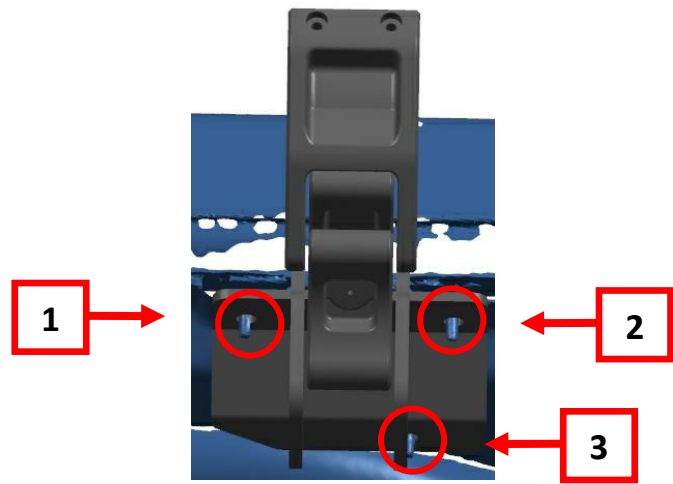
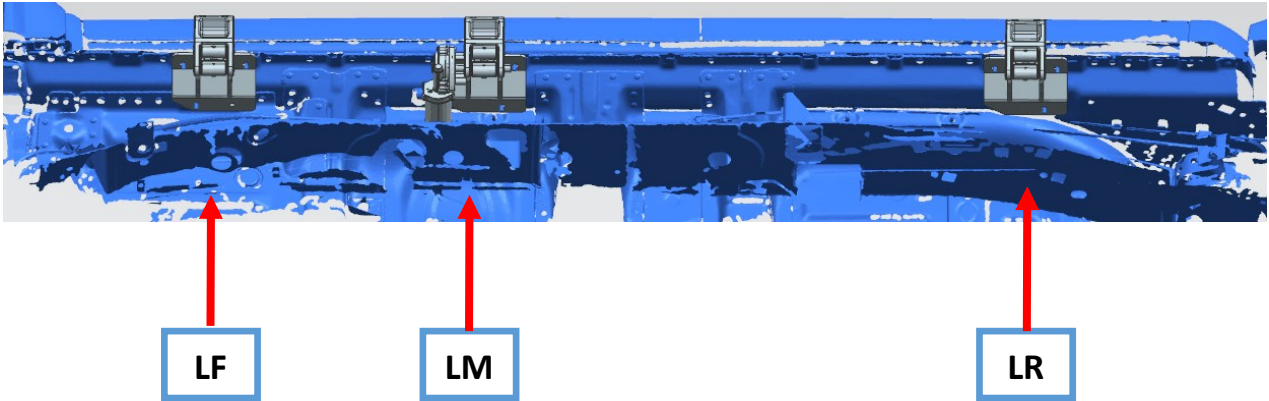


5) use clips to connect them:
signal yellow to blue and signal

6) Recover the plate

2. Install connections (left side, 2 sides in same way to install)

← Car direction (left)

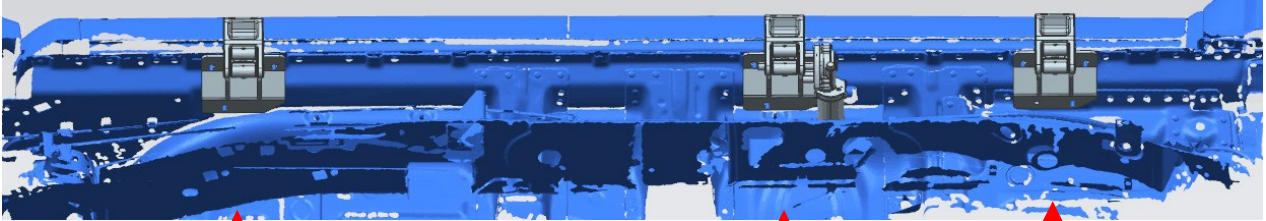


1, 2, 3, use M8 nut to fix. Other brackets are in same way

Important: Don't tighten all the screws.

3. Install bracket (right side)

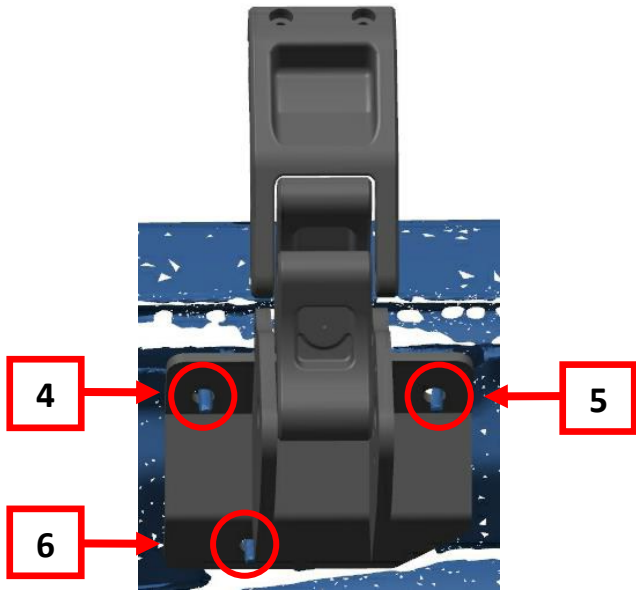
Car direction; right side 



↑
LF

↑
LM

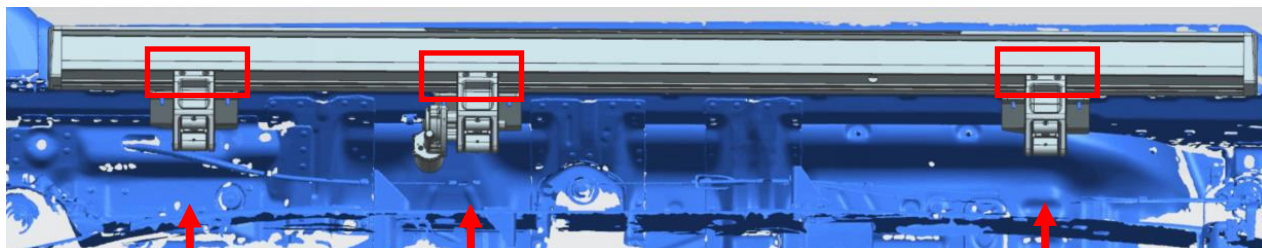
↑
LR



4, 5, 6, use M8 nut to fix. Other brackets are in same way

Important: Don't tighten all the screws.

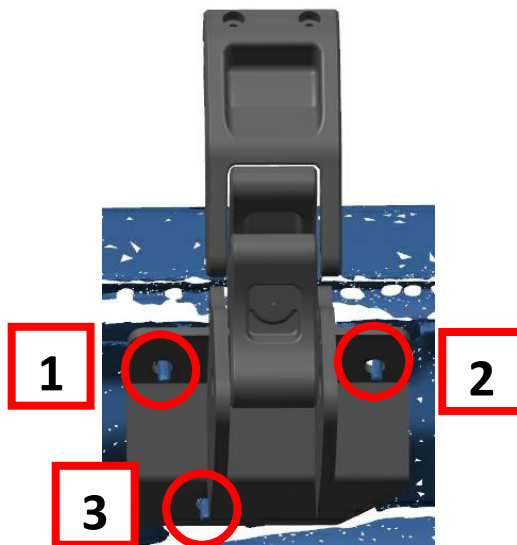
4. install running board (left and right side are in same way)



1) Use M6x25 socket cap screw to fix running board with brackets as the picture above showed.

TIGHTEN SCREWS !

5. Testing and adjust the balance. Then tighten screws.



1. Insert fuse again. Then open and close doors to let step work. To assure them up and down freely to adjust position by itself.

2. FASTEN ALL THE SCRWS (3x6=18) ON THE 6 BRACKETS
If still not balance, use U shape washer to adjust it.

Installation finished



Automatic power deployment:

The side steps will extend down and out when the door is opened.

Automatic stop:

If an object is in the way of the moving side step, the side step will automatically stop. To reset, clear any obstruction, then simply open and close the door to resume normal operation.

Manually set in the deployed (OUT) position for access to the roof:

Stand on the side step while closing the door. To resume normal operation, open and close the door.

Maintenance:

In adverse conditions, debris such as mud, dirt, and salt may become trapped in the side step mechanism, possibly leading to unwanted noise. If this occurs, avoid spraying the motors directly and after washing, apply silicone spray lubricant to the hinge pivot pins.

Caution! Keep hands and feet away when the side steps are in motion.

Thank you for choosing the OCAM Electric Side Steps. Enjoy!!