

OCAM

4X4
ACCESSORIES

INSTALLATION INSTRUCTIONS

PART NUMBER: SSE2-HILUX-15

APPLICATION: TOYOTA HILUX 2015-On

FITTING TIME: 4 hours



OCAM 4x4 Accessories
31 Shirley Way, Epping, VIC 3076
Telephone (03) 9357-0306
Email: hello@ocam.com.au
ABN: 33166112278

IMPORTANT INFORMATION

- Always wear safety glasses and hearing protection.
- Make sure work area is kept clean at all times.
- Check that all components, as listed, are present.
- Thoroughly read all instructions.
- This product or its fasteners must not be modified in any way.
- These instructions are accurate as at the revision date and do not take into account any changes made by the vehicle manufacturer to vehicle design after the revision date, or other accessories that are or have been fitted to the vehicle.
- It is the responsibility of the installer to confirm correct operation/clearance of all components.
- All holes drilled must have all burrs and swarf removed then coated with a suitable rust preventative paint.
- Ensure that all hardware is fastened to torque list as detailed in these instructions.
- On completion of the job, these instructions are to be given to the customer.

PRODUCT CARE

- To maintain the appearance of the product, wash and dry regularly using a quality car wash.
- The product should be periodically checked for tightness.

| Torque Settings | | |
|-----------------|-----------|--------------|
| BOLT SIZE mm | TORQUE Nm | TORQUE ft.lb |
| M5 | 5 | 4 |
| M6 | 9 | 7 |
| M8 | 22 | 16 |
| M10 | 44 | 32 |
| M12 | 77 | 57 |

Tools Required



COMPONENTS LIST



ECU



Rear bracket connectors - 2



Middle bracket connectors - 2



Front bracket connectors - 2



Idler bracket - 4 sets



Wire harness: one set for motor power and signal



M8x30 socket cap bolt 8 PCS



M6x25 socket cap bolt 12 PCS



M8 washer 12 PCS



M6 spring washer 12PCS



U-shaped washer 10 PCS



M6 washers 12PCS



Motor bracket -2 set



OBD Kit 1 Set



Plastic line 1 PCE



M8x35 socket cap bolt 2 PCS



M8x55 socket cap bolt 2 PCS



M8 nut with conical washer 2PCS



Side Steps 2PCS



Cable ties 20PCS

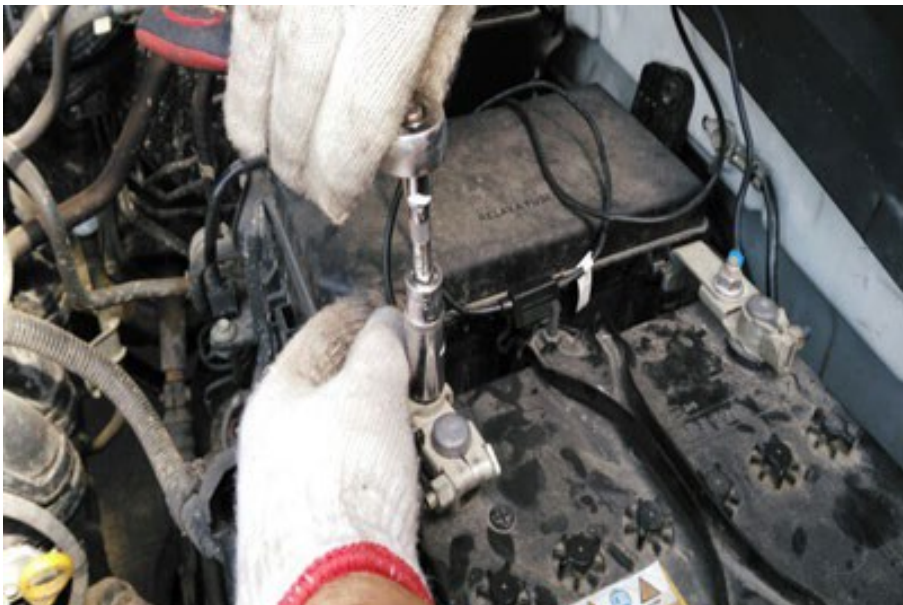
1. Install ECU, OBD & Wiring



1. Remove the fuse in harness



2. Remove the fuse from the supplied wiring harness



3. Caution: tighten the battery nut securely.



4. Route the right-hand motor harness through the rubber support block to the driver side



5. Secure the negative in position as shown



6. Secure the ECU module at the driver side (kick-panel) as shown. Use the 3M tape,



7. Route the harness to the passenger side from this position



8. Connect the OBD, as shown.



9. Route the right hand motor harness from the chassis to the cabin using the existing grommet near driver side scuff plate



10. This image shows where to route



11. The image shows the grommet mentioned in #9

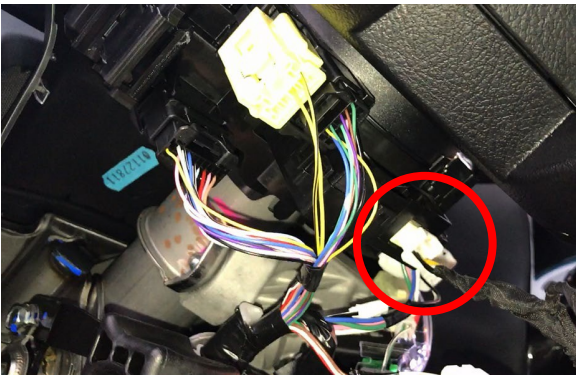
12. Connect the motor connectors and use electric tape to secure the connections. Connect all connectors to the ECU module. Insert the fuse and test if the motor works correctly.

Regarding Hilux (approx. 2017+), data is received from under the steering and not the OBD connector.

Before unplugging the connector, shut down the engine. Check if you've re-connected all connectors on the vehicle before you start the engine. Otherwise you will find error codes in the dash. This is very important



1. Start engine, disassemble 3 screws under steering. **Then shut down engine.** Take off the plastic cover under steering



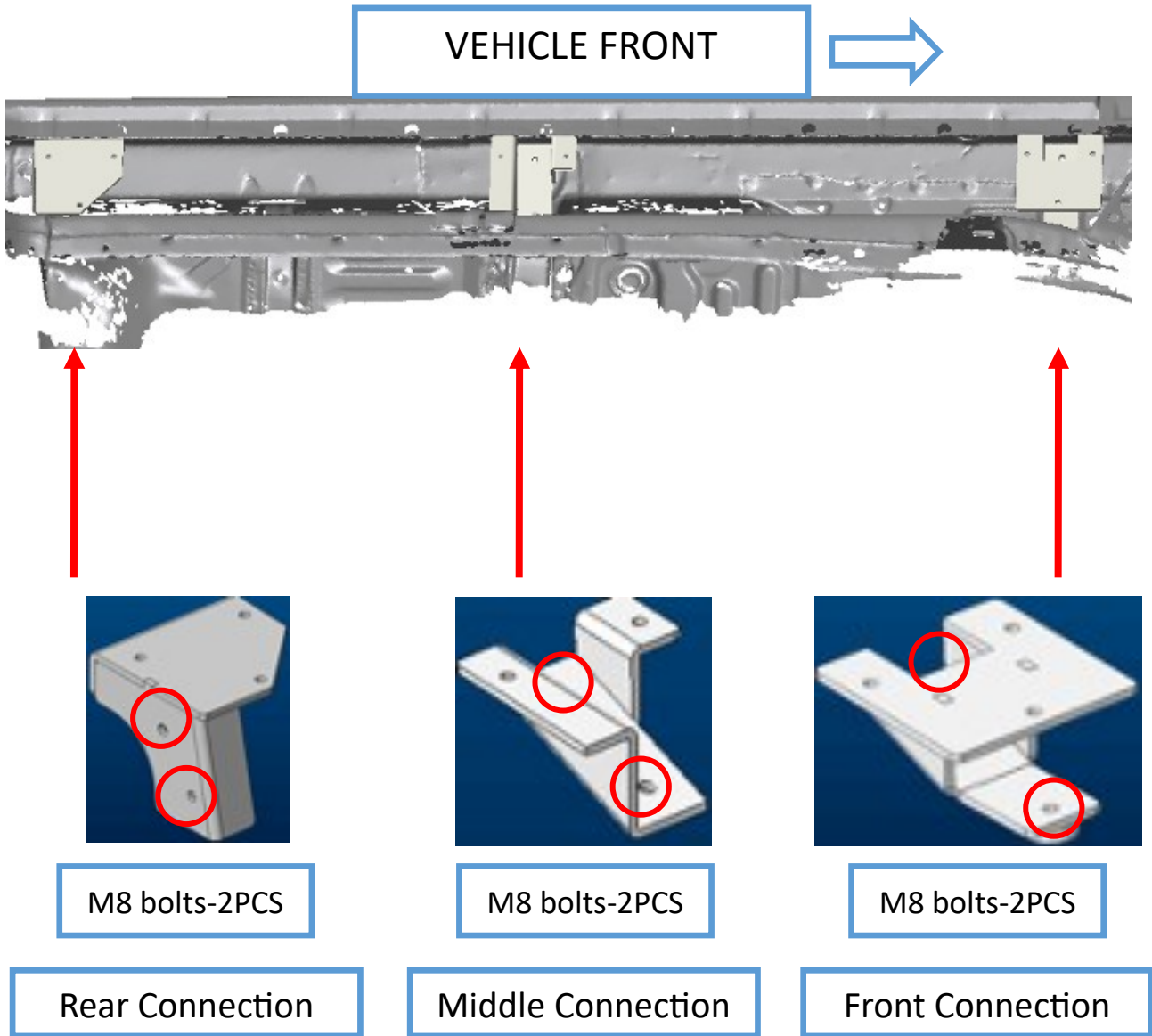
2. Find the connector under steering and unplug it



3. Plug with our connector then insert it back to original position.

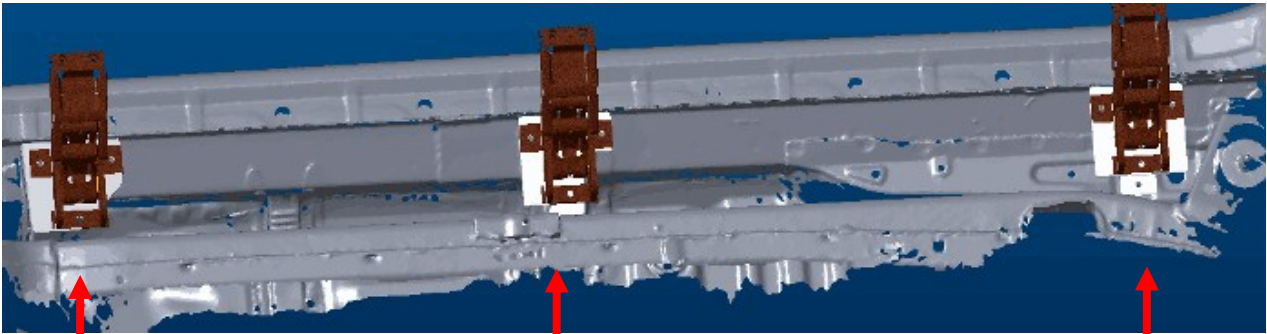
Others are same as above instruction

2. Install the bracket bases to the right (driver) side. Do the same for the left (passenger) side.



TIGHTEN ALL BOLTS!

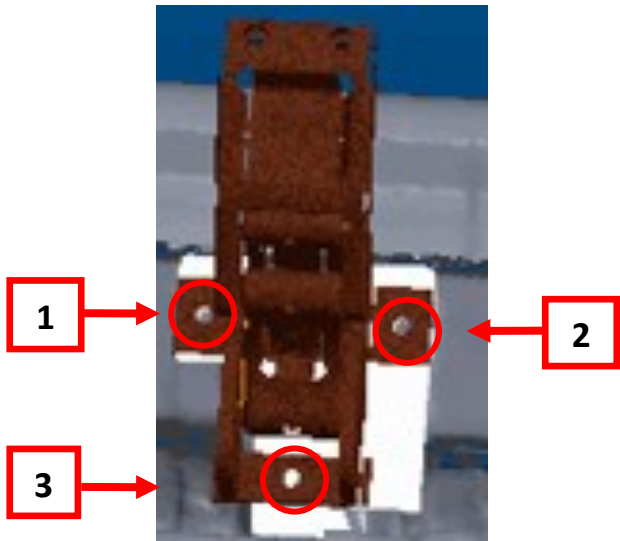
3. Install the 2 x idler brackets and 1 x motor bracket (center) to the right (driver) side. Do the same for the left (passenger) side.



RR idler bracket

Right middle motor bracket

RF idler bracket

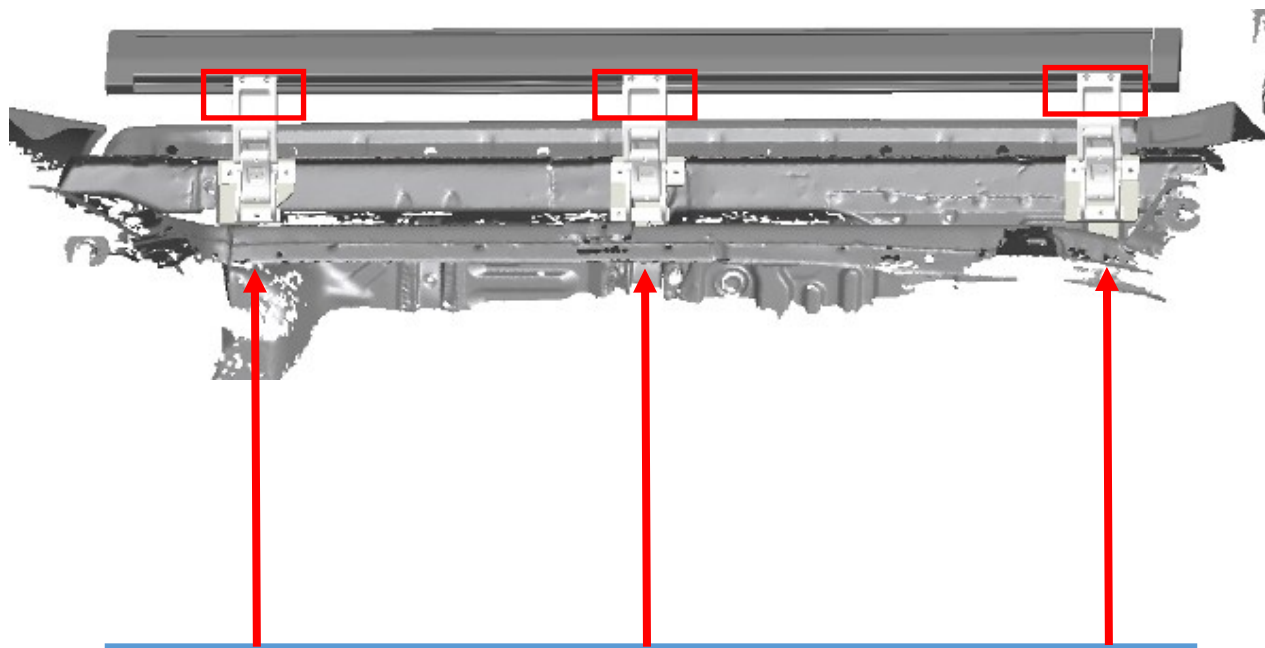


For 1, 2, 3, use M8X30 bolts and nuts to fix

All 3 brackets are installed in the same way

KEEP ALL BRACKET BOLTS SLIGHTLY LOOSE, SO THAT THE BRACKETS CAN BE ADJUSTED WHEN BALANCING THE STEPS

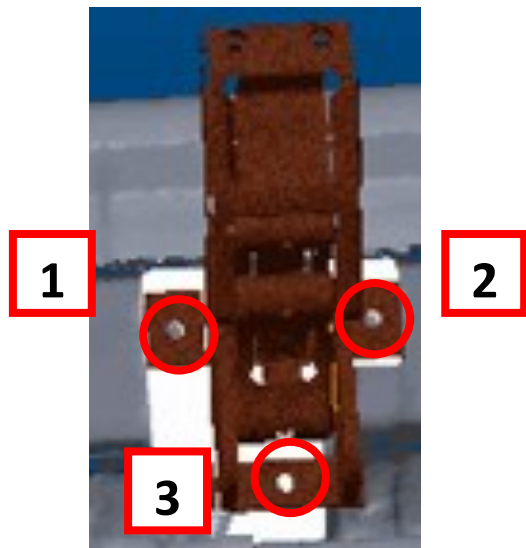
4. Install the running boards (use the same process for left and right).



Use M6x25 screw and spring washers to fix running board with brackets.

TIGHTEN SCREWS !

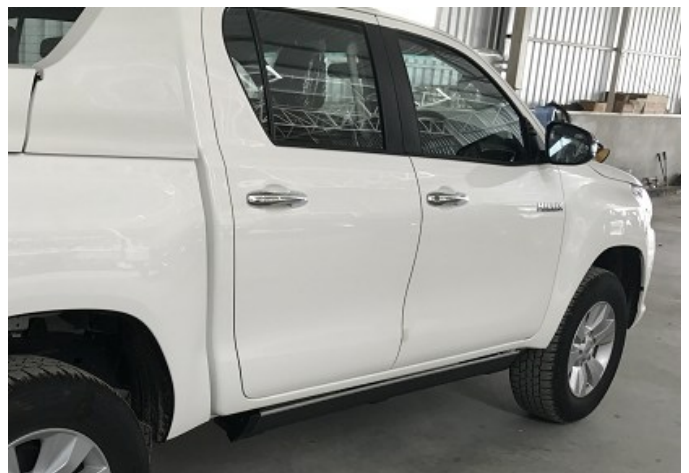
5. Testing and adjusting side steps balance.



1. Re-insert the fuse into the wiring harness. Then open and close the doors to check that the steps work correctly. Ensure the steps are free of any obstruction. As they move up and down they will adjust to the correct position themselves.

2. TIGHTEN ALL BOLTS ON THE 6 BRACKETS (3X6=18). If the side steps are out of alignment, use the U-shaped washers to adjust them.

6. Check that the side steps are working correctly upon opening and closing the doors. The installation is now complete. Thank you for choosing the OCAM Electric Side Steps. Enjoy!!



Automatic power deployment:

The side steps will extend down and out when the door is opened.

Automatic stop:

If an object is in the way of the moving side step, the side step will automatically stop. To reset, clear any obstruction, then simply open and close the door to resume normal operation.

Manually set in the deployed (OUT) position for access to the roof:

Stand on the side step while closing the door. To resume normal operation, open and close the door.

Maintenance:

In adverse conditions, debris such as mud, dirt, and salt may become trapped in the side step mechanism, possibly leading to unwanted noise. If this occurs, avoid spraying the motors directly and after washing, apply silicone spray lubricant to the hinge pivot pins.

Caution! Keep hands and feet away when the side steps are in motion.

Thank you for choosing the OCAM Electric Side Steps. Enjoy!!