

OCAM

4X4
ACCESSORIES

INSTALLATION INSTRUCTIONS

PART NUMBER: SSE2-300

APPLICATION: TOYOTA LANDCRUISER 300 SERIES

FITTING TIME: 4 hours



OCAM 4x4 Accessories
31 Shirley Way, Epping, VIC 3076
Telephone (03) 9357-0306
Email: hello@ocam.com.au
ABN: 33166112278

IMPORTANT INFORMATION

- Always wear safety glasses and hearing protection.
- Make sure work area is kept clean at all times.
- Check that all components, as listed, are present.
- Thoroughly read all instructions.
- This product or its fasteners must not be modified in any way.
- These instructions are accurate as at the revision date and do not take into account any changes made by the vehicle manufacturer to vehicle design after the revision date, or other accessories that are or have been fitted to the vehicle.
- It is the responsibility of the installer to confirm correct operation/clearance of all components.
- All holes drilled must have all burrs and swarf removed then coated with a suitable rust preventative paint.
- Ensure that all hardware is fastened to torque list as detailed in these instructions.
- On completion of the job, these instructions are to be given to the customer.

PRODUCT CARE

- To maintain the appearance of the product, wash and dry regularly using a quality car wash.
- The product should be periodically checked for tightness.

Torque Settings		
BOLT SIZE mm	TORQUE Nm	TORQUE ft.lb
M5	5	4
M6	9	7
M8	22	16
M10	44	32
M12	77	57

Tools Required

- | | |
|--|--|
| <ol style="list-style-type: none"> 1.  2.  3.  4.  | 


 |
|--|--|

COMPONENTS LIST



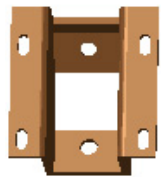
ECU



Bracket connector front - 2PCS



Bracket connection, middle 2PCS



Bracket connection, rear 2PCS



Idler bracket 4 Sets



Wire harness: one set for motor power and signal



M8*20 screw ,8 pcs



M6x25 socket cap bolt 12 PCS



M8 washer 14 PCS



M6 spring washer 12 pcs



U shaped washer 10pcs



M6 washers 12PCS



Motor bracket 2 sets



OBD KIT 1 SET



M8 nut 4 PCS



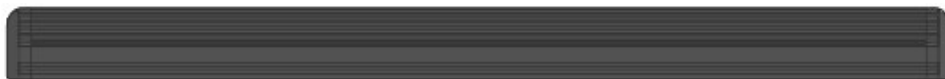
Plastic line 1



M8x25 bolts 10 PCS



Cable ties 20PCS



Side Steps 2PCS

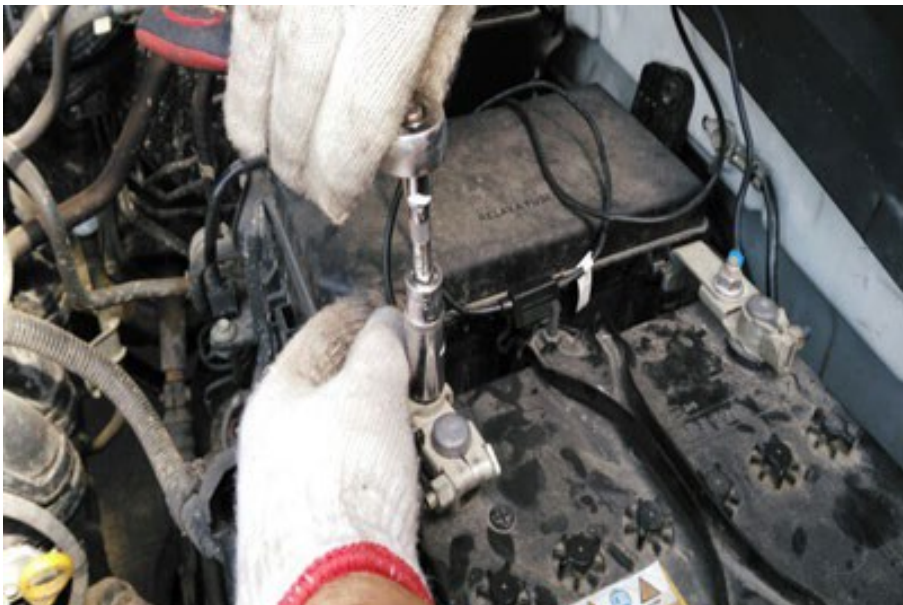
1. Install ECU, OBD & Wiring



1. Remove the fuse from the supplied wiring harness



2. Connect the positive wire (red with fuse) to the vehicle battery-positive terminal.
Caution: Ensure nut is tight.



3. Tighten battery nut.
Caution: Ensure nut is tight.



4. Find the rubber grommet on the firewall as shown on the passenger side. Route the harness through to the cabin.



5. Secure the negative in position



6. Use the 3M tape to stick the ECU module down in this position



7. Route the right motor harness and OBD line from this position to the driver side



8. Remove the door switch plastic cover



9. Locate the door switch connector



10. Remove the door switch connector



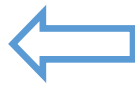
11. Connect the supplied door switch harness adapter, as shown, with the factory door switch connector



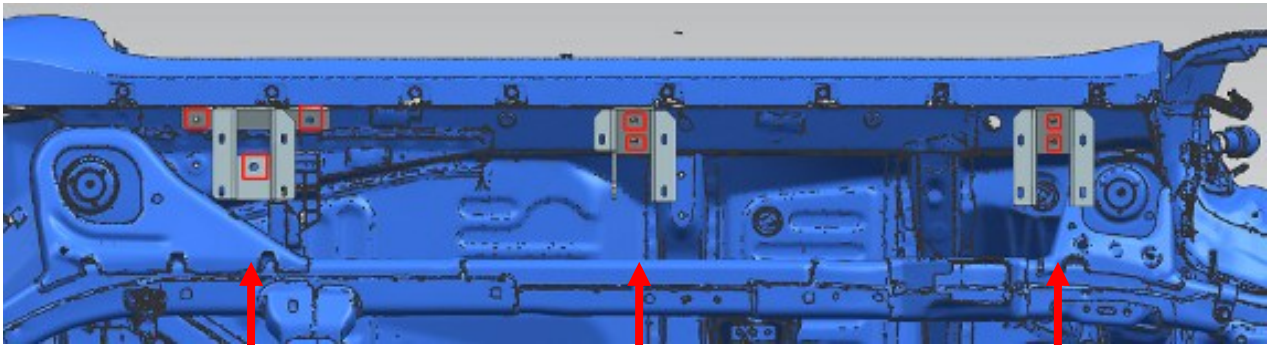
12. Route the motor harness through floor pan grommet, as shown line to the chassis

13. Connect motor connectors and cover in electric tape to secure the connections.. Re-insert the fuse and test if the motor is working correctly..

2. Install connections (left side, 2 sides in same way to install)

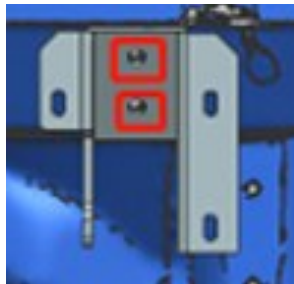


Car direction (left)



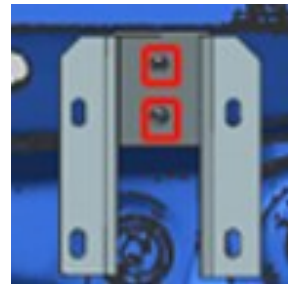
LF

Use M8x35 T-shape & M8x25



LM

Use M8x25 bolts

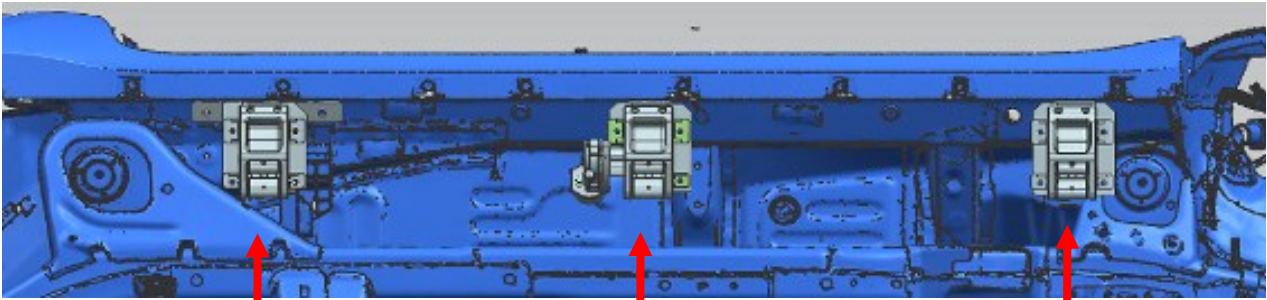


LR

Use M8x25 bolts

Tighten all bolts!

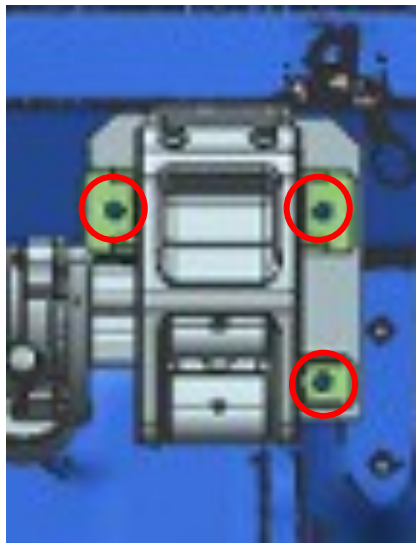
3. Install the brackets to the left (passenger) side, Then do the same to the right (driver) side.



Left-front bracket with

Left-front bracket with

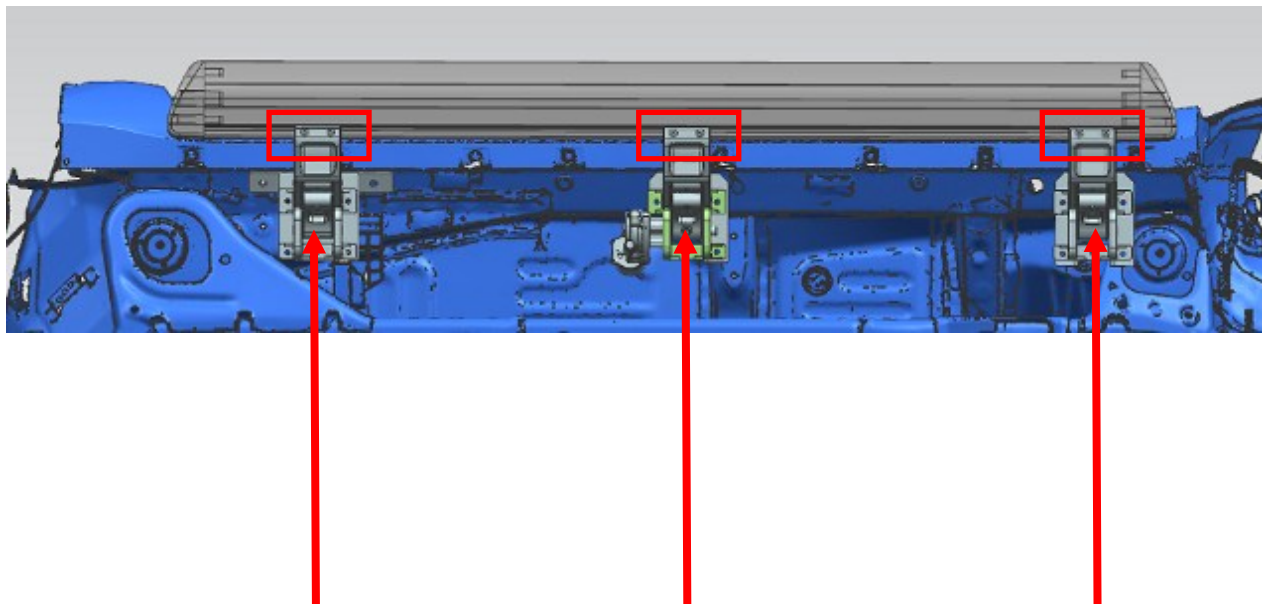
Left-front bracket with



Fix brackets to the connectors

Do not tighten the bolts yet. Leave loose so that you can adjust the balance at the end !

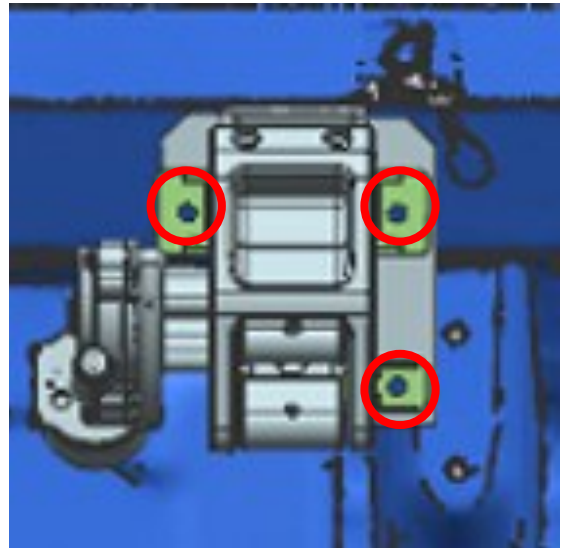
4. Install the side steps. Left and right are installed in the same way



Use M6x25 bolts and spring washers to fix the side steps to the brackets as shown above.

TIGHTEN THESE BOLTS!!

5. Test and adjust/balance the side steps



1. Re-insert the fuse into the supplied harness. Then open and close the doors to check that the steps work correctly. Ensure the steps are clear of any obstructions. As they move up and down, they will adjust to the correct alignment position themselves.

2. Tighten all the bolts fixing the brackets to the connectors. If the side steps are out of alignment, use the U-shaped washers to adjust them

Installation is complete.



Automatic power deployment:

The side steps will extend down and out when the door is opened.

Automatic stop:

If an object is in the way of the moving side step, the side step will automatically stop. To reset, clear any obstruction, then simply open and close the door to resume normal operation.

Manually set in the deployed (OUT) position for access to the roof:

Stand on the side step while closing the door. To resume normal operation, open and close the door.

Maintenance:

In adverse conditions, debris such as mud, dirt, and salt may become trapped in the side step mechanism, possibly leading to unwanted noise. If this occurs, avoid spraying the motors directly and after washing, apply silicone spray lubricant to the hinge pivot pins.

Caution! Keep hands and feet away when the side steps are in motion.

Thank you for choosing the OCAM Electric Side Steps. Enjoy!!