

OCAM

4X4
ACCESSORIES

INSTALLATION INSTRUCTIONS

PART NUMBER: SSE2-NP300-15

APPLICATION: NISSAN NAVARA D23 NP300, 2015-On

FITTING TIME: 4 hours



OCAM 4x4 Accessories
31 Shirley Way, Epping, VIC 3076
Telephone (03) 9357-0306
Email: hello@ocam.com.au
ABN: 33166112278

IMPORTANT INFORMATION

- Always wear safety glasses and hearing protection.
- Make sure work area is kept clean at all times.
- Check that all components, as listed, are present.
- Thoroughly read all instructions.
- This product or its fasteners must not be modified in any way.
- These instructions are accurate as at the revision date and do not take into account any changes made by the vehicle manufacturer to vehicle design after the revision date, or other accessories that are or have been fitted to the vehicle.
- It is the responsibility of the installer to confirm correct operation/clearance of all components.
- All holes drilled must have all burrs and swarf removed then coated with a suitable rust preventative paint.
- Ensure that all hardware is fastened to torque list as detailed in these instructions.
- On completion of the job, these instructions are to be given to the customer.


PRODUCT CARE

- To maintain the appearance of the product, wash and dry regularly using a quality car wash.
- The product should be periodically checked for tightness.

Torque Settings		
BOLT SIZE mm	TORQUE Nm	TORQUE ft.lb
M5	5	4
M6	9	7
M8	22	16
M10	44	32
M12	77	57

Tools Required

- | | |
|--|--|
| <ol style="list-style-type: none"> 1.  2.  3.  4.  | 


 |
|--|--|

COMPONENTS LIST



ECU



Motor bracket
- 2 PCS



Idler brackets -
4 PCS



OBD Kit 1 Set



Wire harness: one
set for motor
power and signal



Plastic line
1



M6x25
socket cap
bolt 12 PCS



M8 wash-
er 12 PCS



M10 spring
washer
8PCS



U-shaped
washer 10
PCS



M10 nut
with conical
washer 8PCS



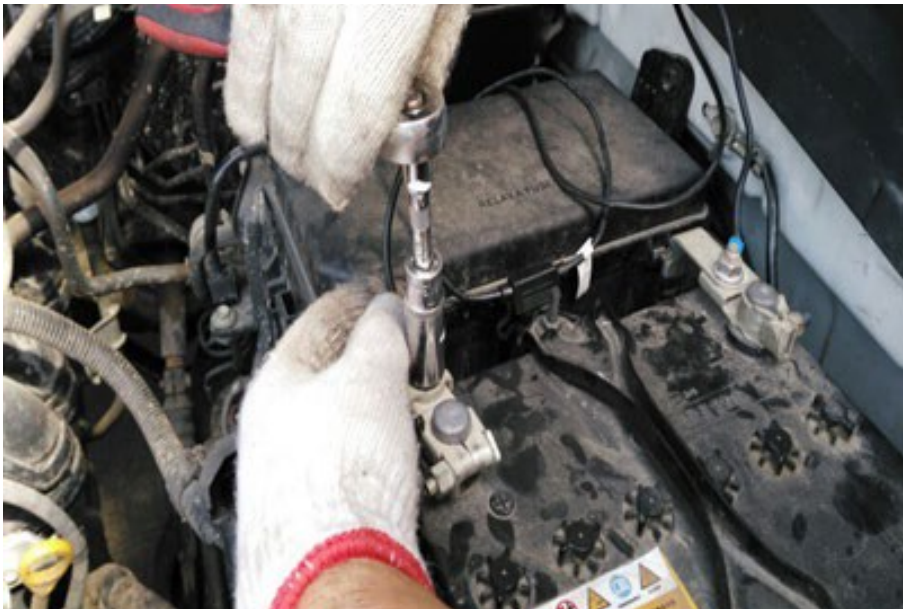
Side Steps 2PCS



Cable ties 20PCS



1. Remove the fuse from the supplied wiring harness



2. Connect the positive wire (red with fuse) to the vehicle battery-positive terminal



3. Caution: tighten the battery nut securely.



4. Route the left-hand motor harness along through the rubber grommet to the passenger side



5. Route the left hand motor harness as shown



6. Repeat on the right side with the right motor harness, bringing it to the right side.



7. Route the harness to the driver side through here to the chassis



8. Using the existing rubber grommet on the firewall as shown, route the harness (three lines) through to the cabin.



9. Inside view



10. Join the 2 connectors as shown. Cover connectors in electrical tape and store in the vehicle to ensure it is kept away from water.



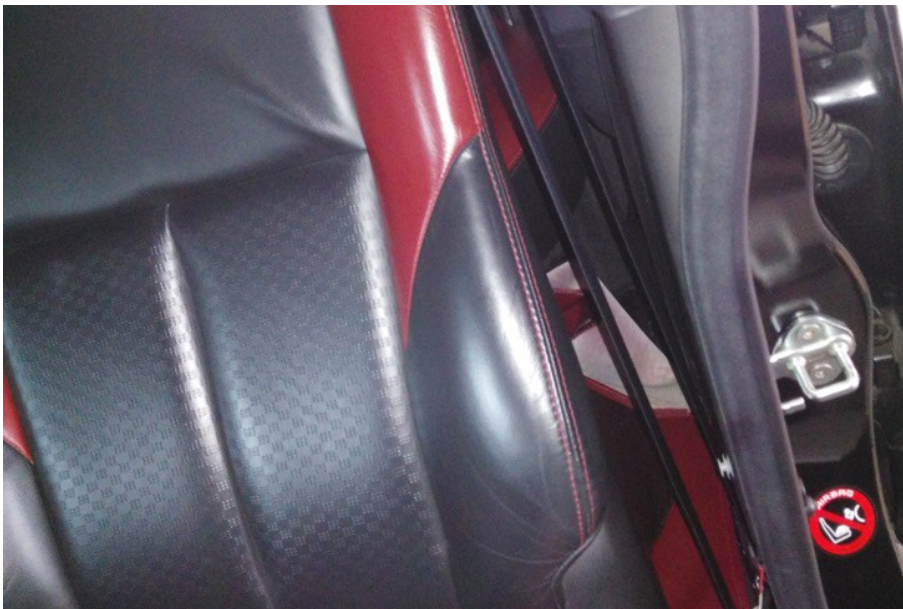
11. Connect negative to the position shown above.



12. Secure the ECU module in the left side kick panel, as shown above.



13. The signal for ECU is sourced from each door switch.



14. Remove the trim panels behind each door to gain access to the door switch.



15. Remove the door switch



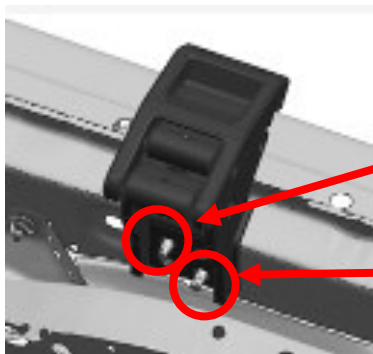
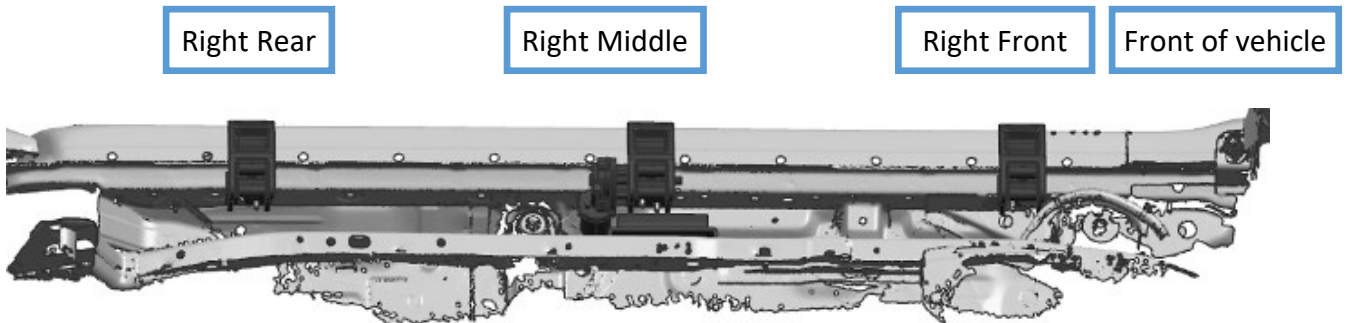
16. Remove the original connector and insert the supplied adapter harness. Then piggy-back (re-install) the original connector.



17. Do the same for the other 3 doors

18. Connect the motor connectors and use electric tape to secure the connections. Connect all connectors to the ECU module. Insert the fuse and test if the motor works correctly.

2. Install the brackets to the right (driver) side.



1

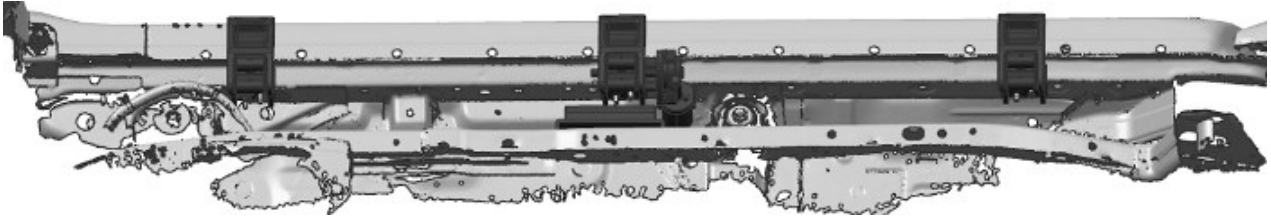
2

For 1 & 2 use M8 nut to fix. Do the same for all 3

KEEP ALL BRACKET BOLTS SLIGHTLY LOOSE, SO THAT THE BRACKETS CAN BE ADJUSTED WHEN BALANCING THE STEPS

3. Install the brackets to the right (driver) side.

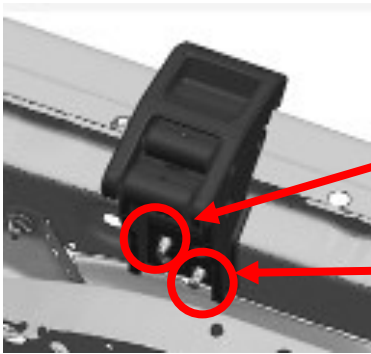
VEHICLE FRONT



Left Front

Left middle

Left Rear



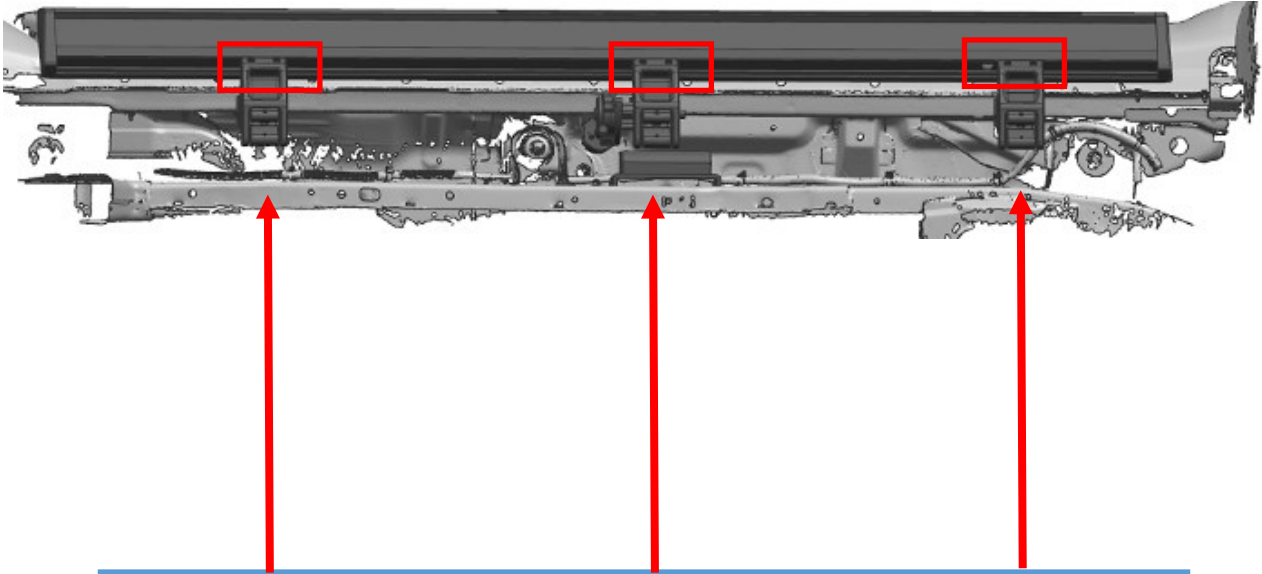
3

4

For 3 & 4, use M8 nut to fix. Do the same for

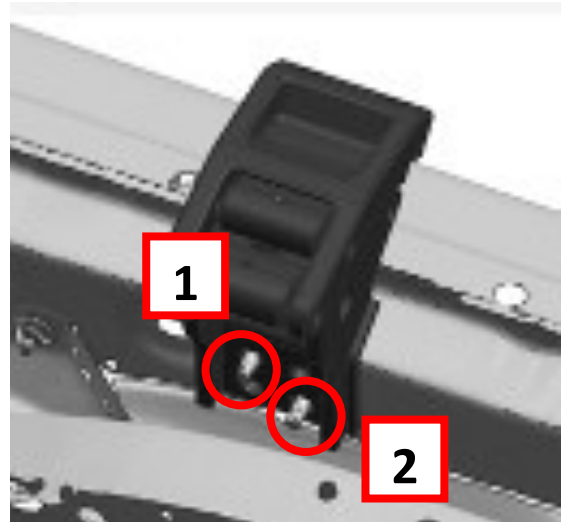
KEEP ALL BRACKET BOLTS SLIGHTLY LOOSE, SO THAT THE BRACKETS CAN BE ADJUSTED WHEN BALANCING THE STEPS

4. install running board (left and right side are in same way)



Use M6x25 bolts and spring washers to fix running boards to the brackets..
TIGHTEN BOLTS!!

5. Test and adjust side steps alignment/balance



1. Re-insert the fuse into the wiring harness. Then open and close the doors to check that the steps work correctly. Ensure the steps are free of any obstruction. As they move up and down they will adjust to the correct position themselves.

2. TIGHTEN ALL BOLTS ON THE 6 BRACKETS (3X6=18). If the side steps are out of alignment, use the U-shaped washers to adjust them.

6. Check that the side steps are working correctly upon opening and closing the doors. The installation is now complete. Thank you for choosing the OCAM Electric Side Steps. Enjoy!!



Automatic power deployment:

The side steps will extend down and out when the door is opened.

Automatic stop:

If an object is in the way of the moving side step, the side step will automatically stop. To reset, clear any obstruction, then simply open and close the door to resume normal operation.

Manually set in the deployed (OUT) position for access to the roof:

Stand on the side step while closing the door. To resume normal operation, open and close the door.

Maintenance:

In adverse conditions, debris such as mud, dirt, and salt may become trapped in the side step mechanism, possibly leading to unwanted noise. If this occurs, avoid spraying the motors directly and after washing, apply silicone spray lubricant to the hinge pivot pins.

Caution! Keep hands and feet away when the side steps are in motion.

Thank you for choosing the OCAM Electric Side Steps. Enjoy!!