

# OCAM

**4X4**  
**ACCESSORIES**

## INSTALLATION INSTRUCTIONS

PART NUMBER: SSE2-RAM-DS

APPLICATION: RAM

FITTING TIME: 4 hours



OCAM 4x4 Accessories  
31 Shirley Way, Epping, VIC 3076  
Telephone (03) 9357-0306  
Email: [hello@ocam.com.au](mailto:hello@ocam.com.au)  
ABN: 33166112278

## IMPORTANT INFORMATION

- Always wear safety glasses and hearing protection.
- Make sure work area is kept clean at all times.
- Check that all components, as listed, are present.
- Thoroughly read all instructions.
- This product or its fasteners must not be modified in any way.
- These instructions are accurate as at the revision date and do not take into account any changes made by the vehicle manufacturer to vehicle design after the revision date, or other accessories that are or have been fitted to the vehicle.
- It is the responsibility of the installer to confirm correct operation/clearance of all components.
- All holes drilled must have all burrs and swarf removed then coated with a suitable rust preventative paint.
- Ensure that all hardware is fastened to torque list as detailed in these instructions.
- On completion of the job, these instructions are to be given to the customer.

## PRODUCT CARE

- To maintain the appearance of the product, wash and dry regularly using a quality car wash.
- The product should be periodically checked for tightness.

Torque Settings		
BOLT SIZE mm	TORQUE Nm	TORQUE ft.lb
M5	5	4
M6	9	7
M8	22	16
M10	44	32
M12	77	57

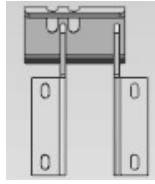
## Tools Required

- |                       |              |
|-----------------------|--------------|
| 1. Wrench tool        | 5. Rivet gun |
| 2. Plastic crow plate |              |
| 3. Tape               |              |
| 4. Pliers             |              |

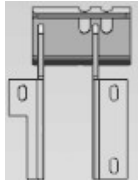
# COMPONENTS LIST



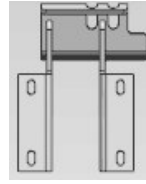
Controller



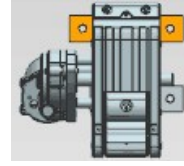
Front plate x2



Middle plate  
x2



Rear plate x2



Drive bracket  
x2



Driven bracket  
x4



M8 Nut  
x12



M6\*25  
hexagon  
screw x12



M6 Gas-  
ket x12



M8\*25  
Flange  
Screw x24



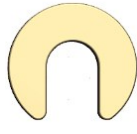
M8 Gas-  
ket x12



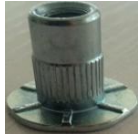
Wire harness:  
one set for  
motor power  
and signal



Plastic line  
1 PCE



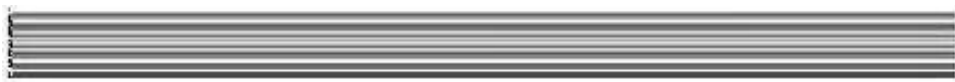
U-Gasket  
x10



M10 rivet  
nut x4



Tie wire x20



Running boards  
x2

# Installation of Controller, OBD & Wiring



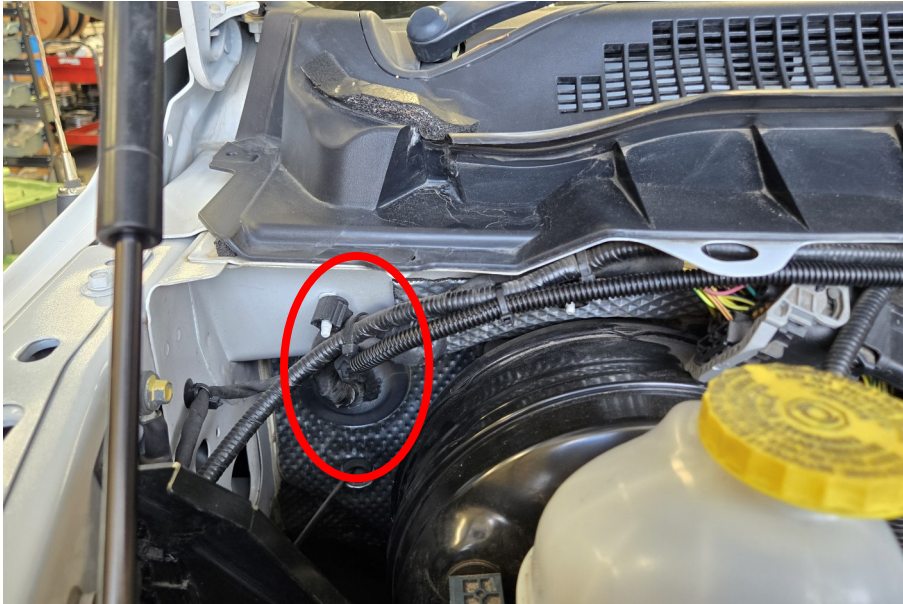
1. Take out the fuse



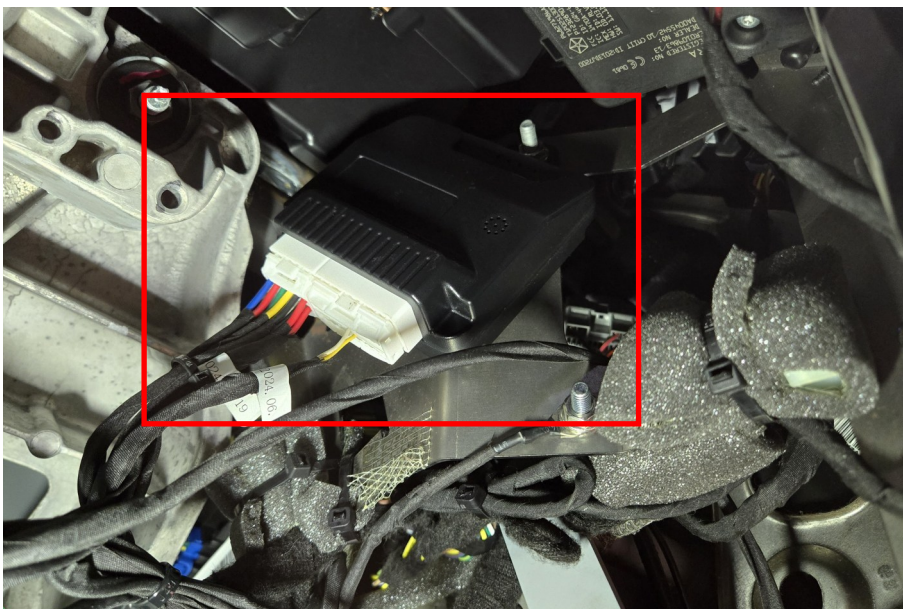
2. Connecting positive pole with battery



3. Caution! Tighten battery screw very tight! If loose, may get damage to the car.



4. Run the positive line from the battery to this wiring grommet



5. Mount control module underneath drivers side kick panel



6. Use existing nut to fix the module



7. Connect the negative cable to existing M6 Bolt directly to metal



8. Lift the carpet and find the access grommet



9. Left and right motor line will run inside the cabin through the access grommet

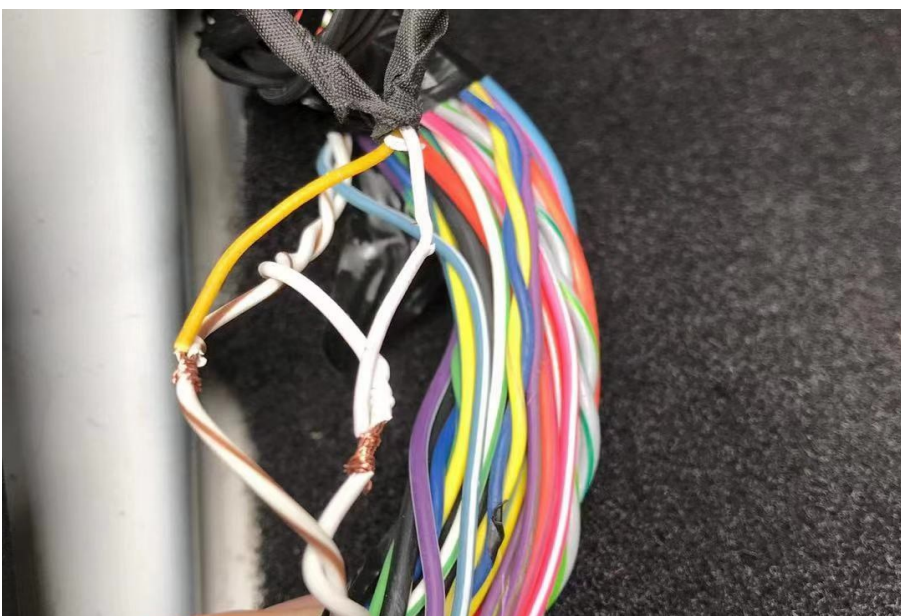


10. The left hand side motor line to be ran against the under vehicle cross member bar

Trigger Wiring for 2017+ Models only — Plug in adaptor requires to be cut off and hard wired as below. For earlier models skip to step 13



11. Locate main body harness on RIGHT HAND side of vehicle



12. Connect the Yellow wire from the step harness to the factory white wire with brown stripe.

Connect the white wire from the step harness to the factory white wire.



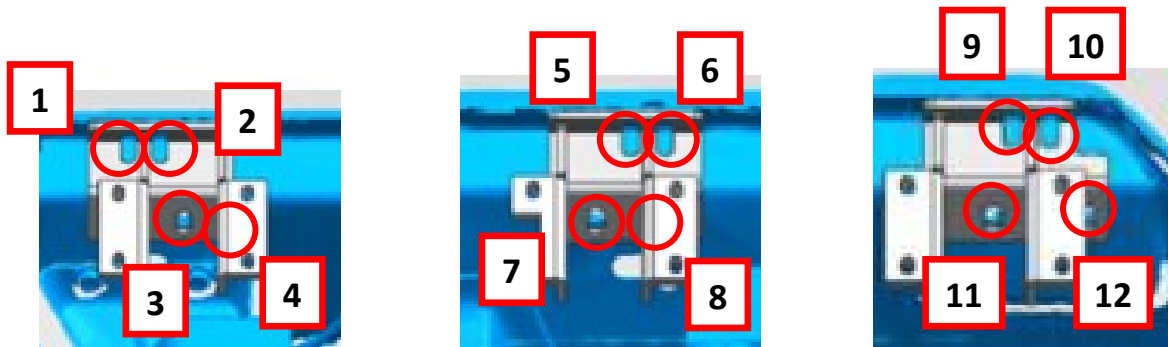
13. At driver side, locate the CAN connector, green connector one

Wiring for 2012-2016 Models Only



14. Insert the adaptor connector into the above green connector, not the white one.

## 2. Install left connection base ( Same way for right side )



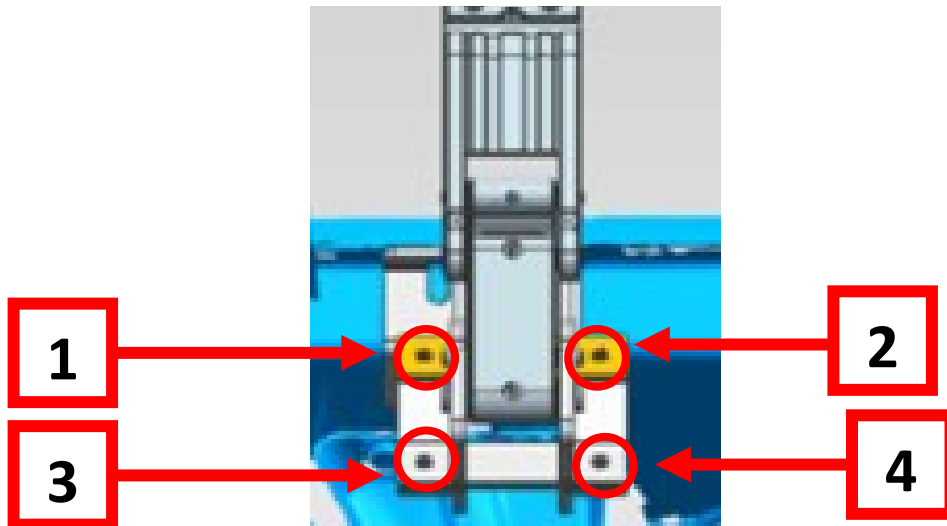
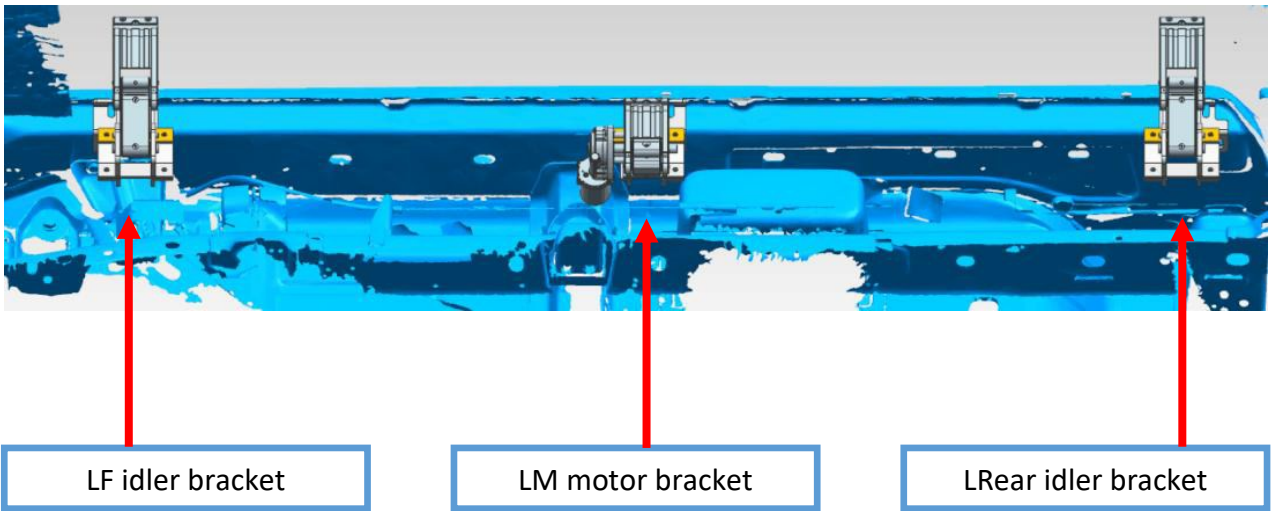
7.8 use rivet gun and nut to fix.

1.4.7 Use M8\*25 flangescrew and M8 nut to fix.  
2.3.5.6.8.9 Use M10 rivet nut and M10 screw to fix.

**Tighten all screws !**

### 3. Install left brackets (Same way for right side)

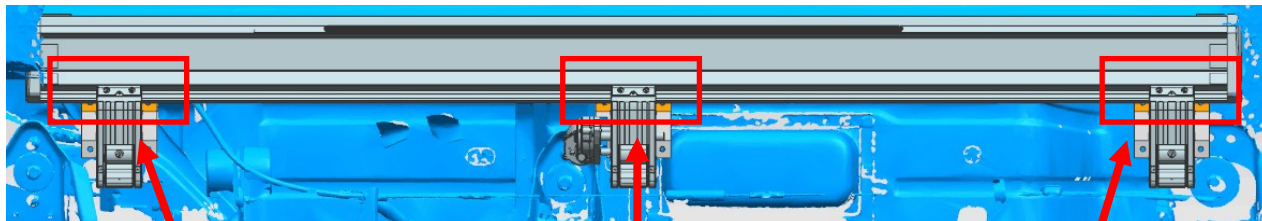
← Car direction (Left side)



1.2.3.4 Use M8\*25 screw to fix, the same way for other bracket.

**KEEP ALL SCREWS A LITTLE LOOSE, SO THAT BRACKET CAN MOVE WITH RUNNING BOARD!!!**

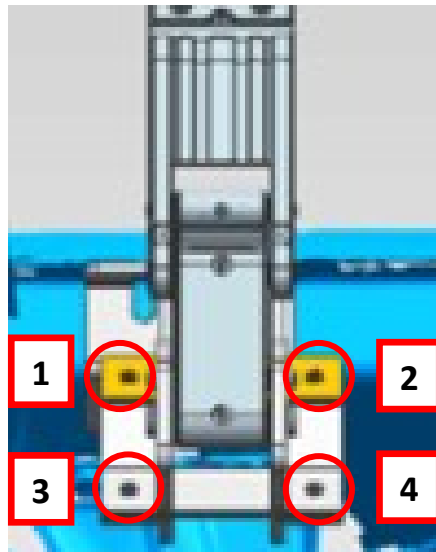
4. Install the side steps. Both side are done in the same way



Use M6x25 screw and spring washers to fix running board with brackets.

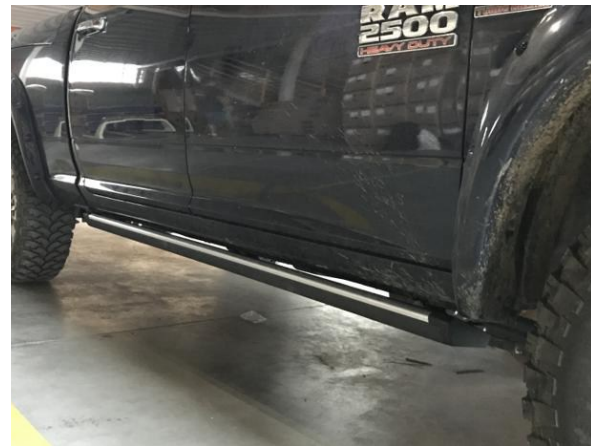
**TIGHTEN SCREWS TO FIX BOARD WITH BRAKETS!**

## 5. Testing and adjust the balance



Insert fuse again. Then open and close doors to let step work. To assure them up and down freely to adjust position by itself.

**FASTEN ALL SCRWS (4x6=24) ON THE 6 BRACKETS**  
If still not balance, use U shape washer to adjust it.



6. Checking all doors activate, the side step work when doors open and close. Now the installation is finished. Protect all connectors with tap to avoid loose.



To lift the car as showed



To lift the car



To changing tire

## **Automatic power deployment:**

The side steps will extend down and out when the door is opened.

## **Automatic stop:**

If an object is in the way of the moving side step, the side step will automatically stop. To reset, clear any obstruction, then simply open and close the door to resume normal operation.

## **Manually set in the deployed (OUT) position for access to the roof:**

Stand on the side step while closing the door. To resume normal operation, open and close the door.

## **Maintenance:**

In adverse conditions, debris such as mud, dirt, and salt may become trapped in the side step mechanism, possibly leading to unwanted noise. If this occurs, avoid spraying the motors directly and after washing, apply silicone spray lubricant to the hinge pivot pins.

Caution! Keep hands and feet away when the side steps are in motion.

Thank you for choosing the OCAM Electric Side Steps. Enjoy!!