

OCAM

4X4
ACCESSORIES

INSTALLATION INSTRUCTIONS

PART NUMBER: SSE2-RANGER-18

APPLICATION: FOR FORD RANGER PX 09/2011-07/2022, FORD EVEREST 2015-07/2022,
MAZDA BT50 11/2011-08/2020

FITTING TIME: 4 hours



OCAM 4x4 Accessories
31 Shirley Way, Epping, VIC 3076
Telephone (03) 9357-0306
Email: hello@ocam.com.au
ABN: 33166112278

IMPORTANT INFORMATION

- Always wear safety glasses and hearing protection.
- Make sure work area is kept clean at all times.
- Check that all components, as listed, are present.
- Thoroughly read all instructions.
- This product or its fasteners must not be modified in any way.
- These instructions are accurate as at the revision date and do not take into account any changes made by the vehicle manufacturer to vehicle design after the revision date, or other accessories that are or have been fitted to the vehicle.
- It is the responsibility of the installer to confirm correct operation/clearance of all components.
- All holes drilled must have all burrs and swarf removed then coated with a suitable rust preventative paint.
- Ensure that all hardware is fastened to torque list as detailed in these instructions.
- On completion of the job, these instructions are to be given to the customer.

PRODUCT CARE

- To maintain the appearance of the product, wash and dry regularly using a quality car wash.
- The product should be periodically checked for tightness.

Torque Settings		
BOLT SIZE mm	TORQUE Nm	TORQUE ft.lb
M5	5	4
M6	9	7
M8	22	16
M10	44	32
M12	77	57

Tools Required

- | | |
|--|--|
| <ol style="list-style-type: none"> 1.  2.  3.  4.  | 


 |
|--|--|

COMPONENTS LIST



ECU



LF / RF idler bracket 2 pcs



LM motor bracket 1PC



LR / RR idler bracket 2pcs



RM motor bracket 1pc



Wire harness: one set for motor



M10x30 socket cap bolt 8 PCS



M10x25 socket cap bolt 8 PCS



M10 washers 8PCS



M6 spring washer 8PCS



M8 washers 8PCS



T-Shape bolt M8x30 2PCS



T-Shape bolt M6x25 2PCS



M8 nut 2 PCS



Plastic line 1 PCE



M6 nut 2 PCS



U-shaped washers 10 PCS



Cable ties 20PCS



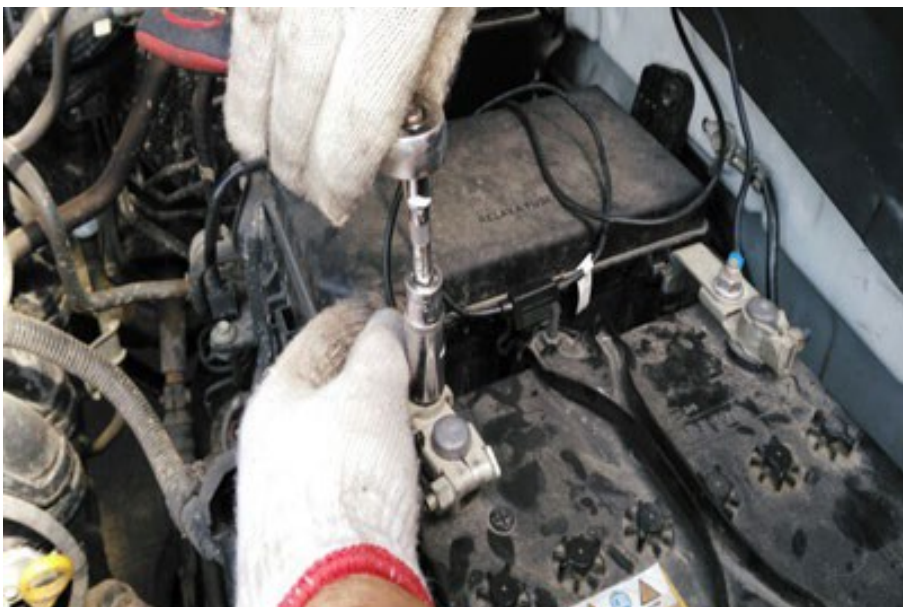
Side Steps 2PCS



1. Remove the fuse from the supplied wiring harness



2. Connect the positive wire (red with fuse) to the vehicle battery-positive terminal



3. Caution: ensure the battery nut is tight.



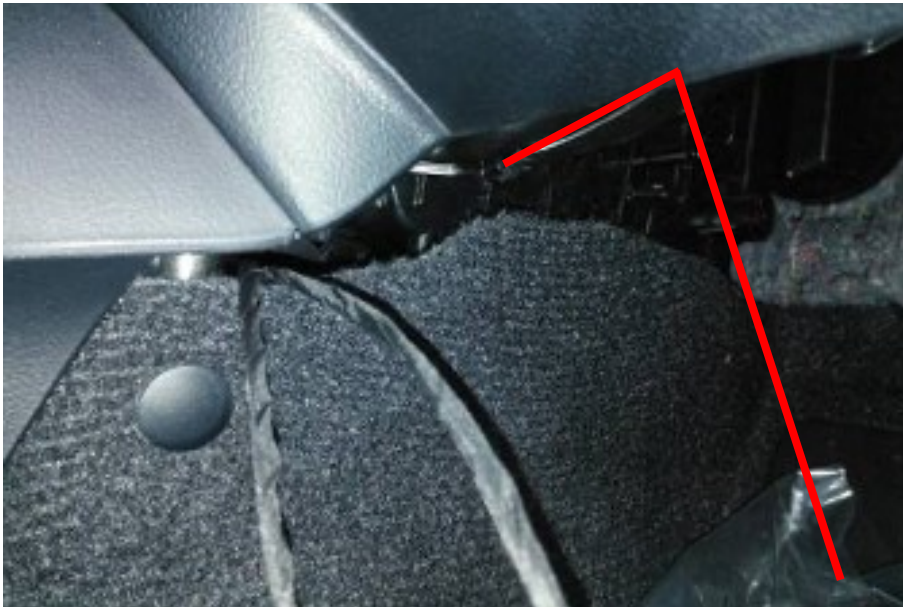
4. Route the left-hand motor harness along through the rubber grommet to the passenger side



5. Secure the negative as shown above



6. Secure the ECU module at the driver side (kick panel) as shown. Use the nut marked with a circle above



7. Route the harness to the passenger side from this position



8. For Ranger 09/2011-08/2018, Everest 2015-08/2018 and BT50 11/2011-03/2018, connect OBD as shown.

For Ranger 09/2018-07/2022, Everest 09/2018-07/2022 and BT50 04/2018-08/2020 refer to the next page



9. Route the right hand motor harness from the chassis to the cabin using the existing grommet near driver side scuff plate



10. This image shows where to route



11. The image shows the grommet mentioned in #9

12. Connect the motor. Use electric tape to secure the connectors. Connect the OBD line with the ECU connector. Re-insert the fuse to test that the motor is working correctly.

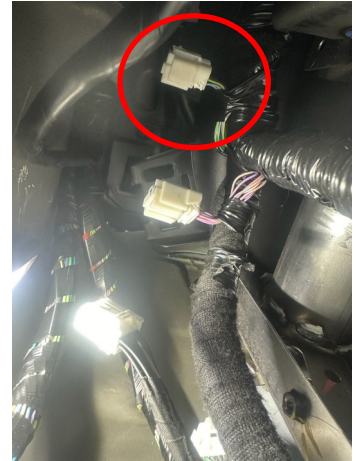
For Ranger & Everest 09/2018+ (All PXIII), BT50 04/2018-8/2020+ data is not received from the OBD connector. See below for specific source location. Before you unplug the connector, shut down the engine and wait for 10 minutes so that the vehicle will be in deep sleep. During installation, do not start engine until you plug in all connectors.



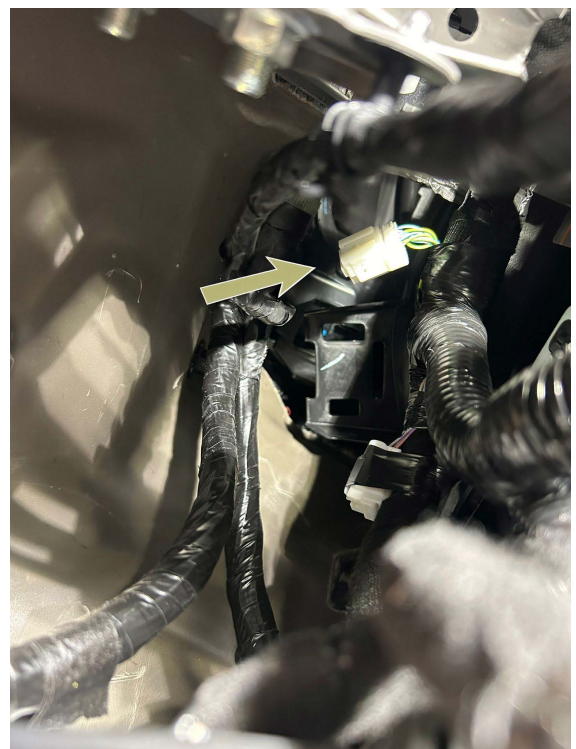
Connector is located above the brake pedal area



Connector is covered by tape with wiring. Carefully cut the tape to release the connector/harness.

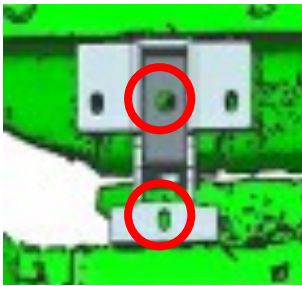
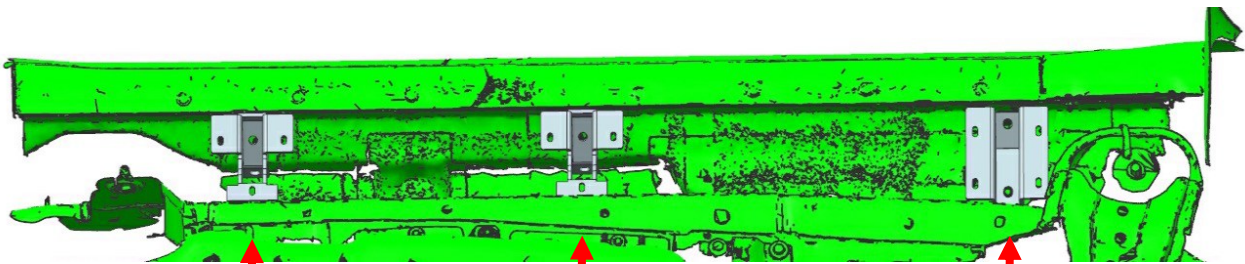


Remove the original connector and insert the supplied adapter harness to the connector shown above. Then piggy-back (re-install) the original connector.

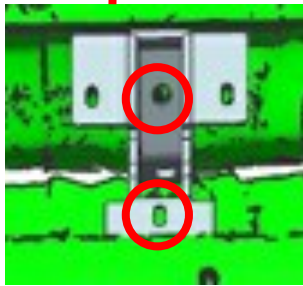


2. Install the bracket bases to the right (driver) side.
Do the same for the left (passenger) side.

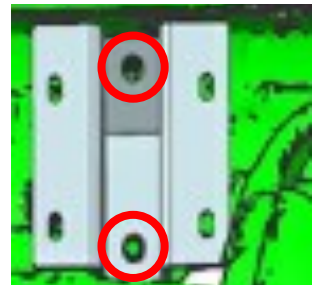
VEHICLE FRONT 



RR



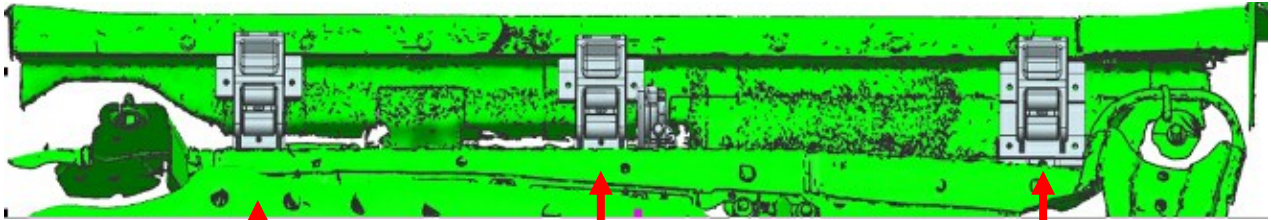
RM



RF

Use M10x30 Bolts
TIGHTEN ALL BOLTS!

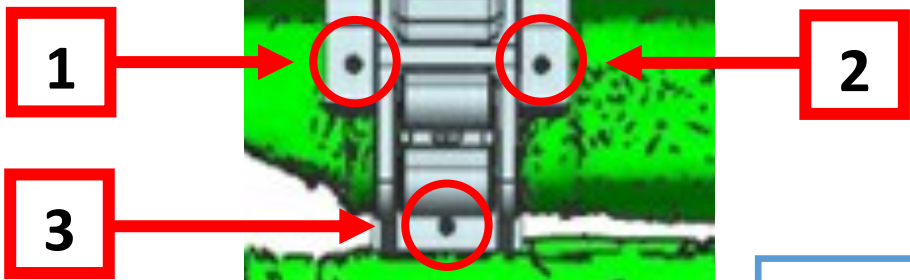
3. Install the 2 x idler brackets and 1 x motor bracket (center) to the right (driver) side. Do the same for the left (passenger) side.



RR-idler bracket

RM-motor bracket

RF-Idler bracket

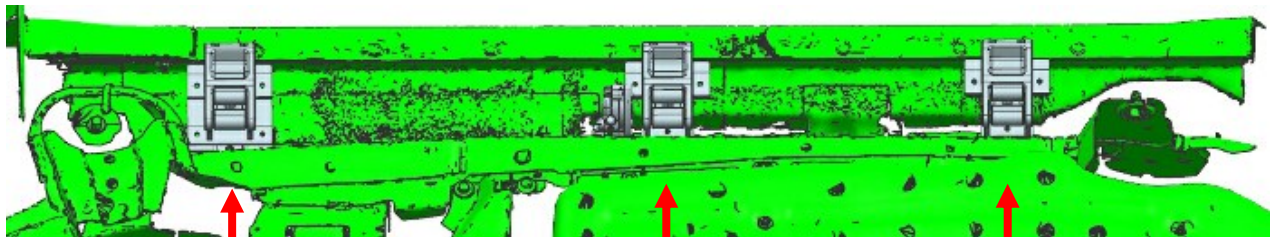


For positions 1, 2, 3, use M8X30 bolts to fix

KEEP ALL BRACKET BOLTS SLIGHTLY LOOSE, SO THAT THE BRACKETS CAN BE ADJUSTED WHEN BALANCING THE STEPS

4. Install the 2 x idler brackets and 1 x motor bracket (center) to the left (passenger) side.

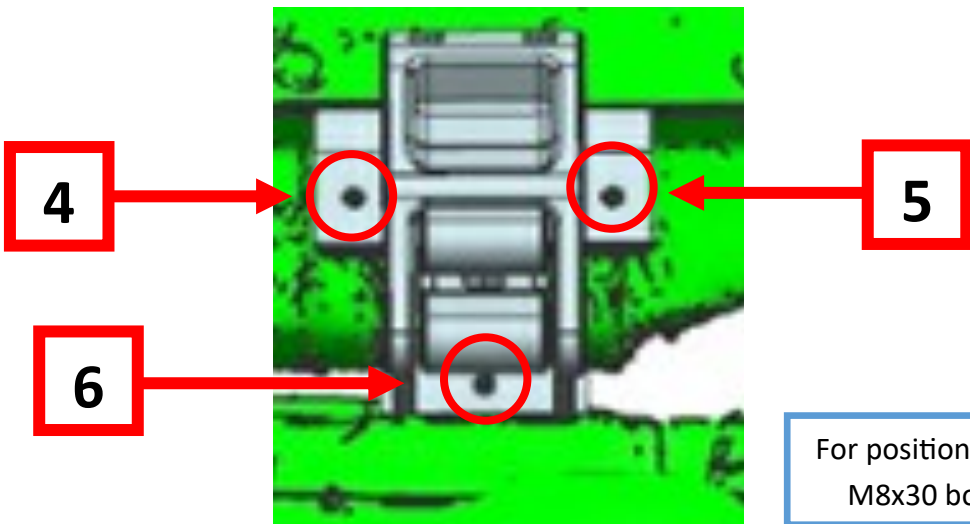
VEHICLE FRONT



LF-Idler bracket

LM-Motor bracket

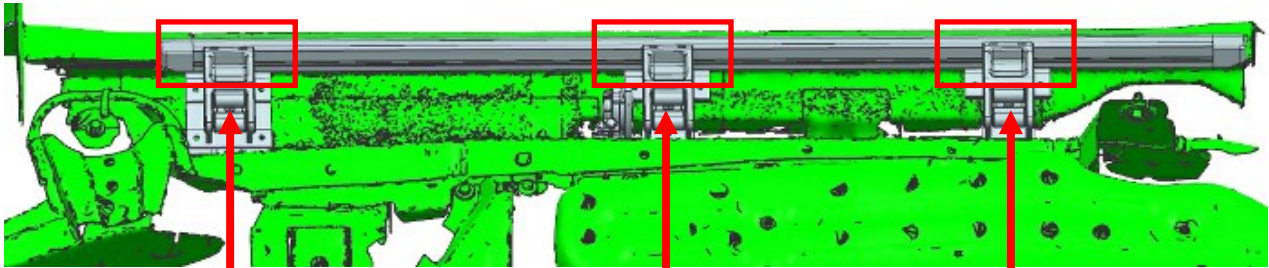
LR-Idler bracket



For positions 4, 5, 6 use M8x30 bolts to fix.

KEEP ALL BRACKET BOLTS SLIGHTLY LOOSE, SO THAT THE BRACKETS CAN BE ADJUSTED WHEN BALANCING THE STEPS

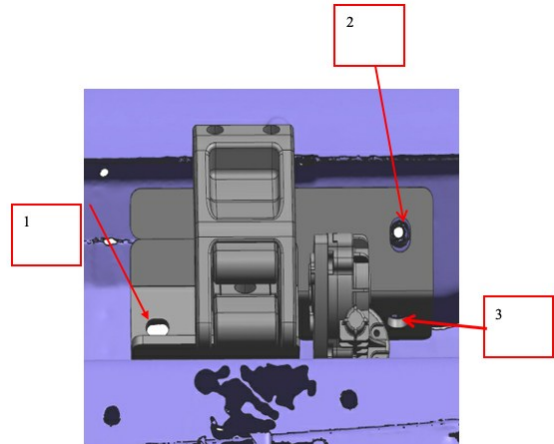
5. Install left (passenger) side step



Use M6x25 bolts and spring washer to fix the side steps to the brackets

TIGHTEN ALL BOLTS TO SECURE THE SIDE STEP TO THE BRACKETS

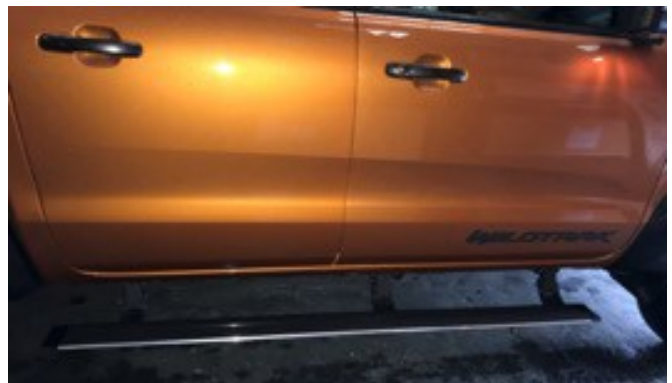
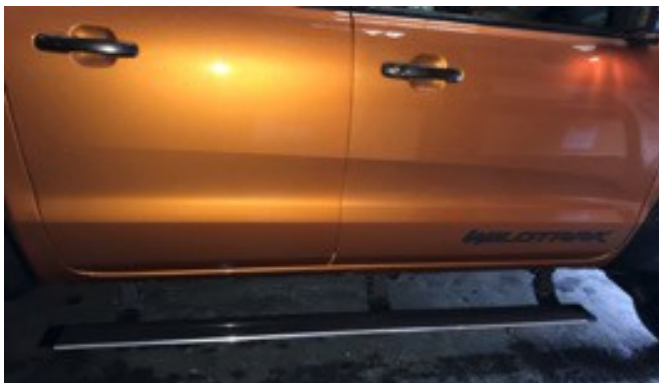
6. Testing and adjusting side steps balance.



1. Re-insert the fuse into the wiring harness. Then open and close the doors to check that the steps work correctly. Ensure the steps are free of any obstruction. As they move up and down they will adjust to the correct position themselves.

2. TIGHTEN ALL BOLTS ON THE 6 BRACKETS (3X6=18).
If the side steps are out of alignment, use the U shaped washers to adjust them.

7. Check that the side steps are working correctly upon opening and closing the doors. The installation is now complete. Thank you for choosing the OCAM Electric Side Steps. Enjoy!!



Automatic power deployment:

The side steps will extend down and out when the door is opened.

Automatic stop:

If an object is in the way of the moving side step, the side step will automatically stop. To reset, clear any obstruction, then simply open and close the door to resume normal operation.

Manually set in the deployed (OUT) position for access to the roof:

Stand on the side step while closing the door. To resume normal operation, open and close the door.

Maintenance:

In adverse conditions, debris such as mud, dirt, and salt may become trapped in the side step mechanism, possibly leading to unwanted noise. If this occurs, avoid spraying the motors directly and after washing, apply silicone spray lubricant to the hinge pivot pins.

Caution! Keep hands and feet away when the side steps are in motion.

Thank you for choosing the OCAM Electric Side Steps. Enjoy!!