

OCAM

4X4
ACCESSORIES

INSTALLATION INSTRUCTIONS

PART NUMBER: SSE2-RANGER-23 AND SSE2-AMAROK-23

APPLICATION: FORD RANGER 06/2022+ AND VOLKSWAGON AMAROK 05/2023+

FITTING TIME: 4 hours



OCAM 4x4 Accessories
31 Shirley Way, Epping, VIC 3076
Telephone (03) 9357-0306
Email: hello@ocam.com.au
ABN: 33166112278

IMPORTANT INFORMATION

- Always wear safety glasses and hearing protection.
- Make sure work area is kept clean at all times.
- Check that all components, as listed, are present.
- Thoroughly read all instructions.
- This product or its fasteners must not be modified in any way.
- These instructions are accurate as at the revision date and do not take into account any changes made by the vehicle manufacturer to vehicle design after the revision date, or other accessories that are or have been fitted to the vehicle.
- It is the responsibility of the installer to confirm correct operation/clearance of all components.
- All holes drilled must have all burrs and swarf removed then coated with a suitable rust preventative paint.
- Ensure that all hardware is fastened to torque list as detailed in these instructions.
- On completion of the job, these instructions are to be given to the customer.

PRODUCT CARE

- To maintain the appearance of the product, wash and dry regularly using a quality car wash.
- The product should be periodically checked for tightness.

Torque Settings		
BOLT SIZE mm	TORQUE Nm	TORQUE ft.lb
M5	5	4
M6	9	7
M8	22	16
M10	44	32
M12	77	57

Tools Required

1. Socket set
2. Electric tape
3. Trim removal tool
4. Pliers

COMPONENTS LIST



ECU



Rear brackets -
2 Sets



Middle brackets
- 2 Sets



Front brackets
- 2 Set



Wire harness: one
set for motor
power and signal



M10x30
socket cap
bolt 12 PCS



M6x25
socket cap
bolt 12 PCS



M10 wash-
ers 12PCS



M10 spring
washer
12PCS



M6 spring
washer
12PCS



U-shaped
washers 10
PCS



Plastic line
1 PCE



Cable ties 20PCS



Side Steps 2PCS

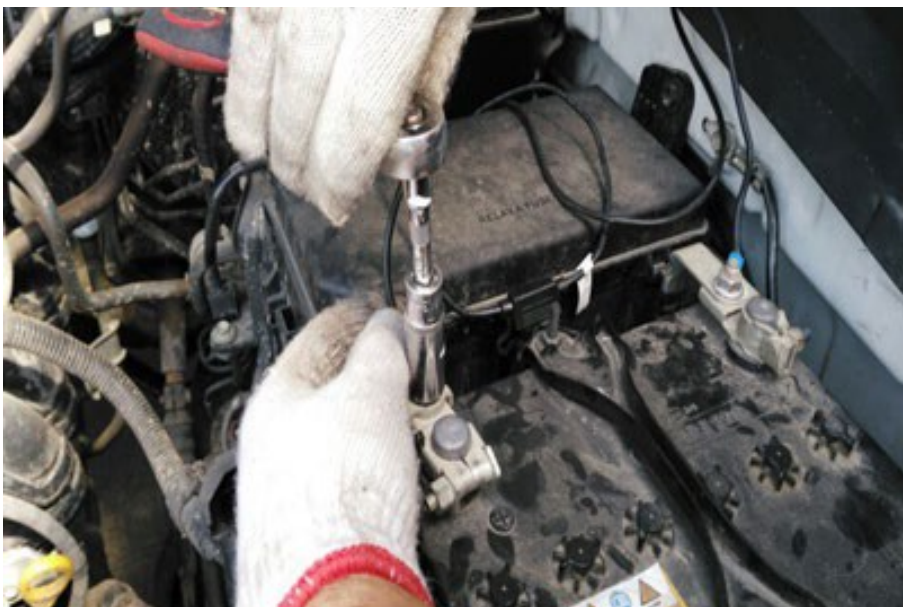
1. Install ECU, OBD & Wiring



1. Remove the fuse from the supplied wiring harness



2. Connect the positive wire (red with fuse) to the vehicle battery-positive terminal



3. Ensure battery nut is tight.



4. Route the positive harness through to the driver side of the cabin as shown



5. Locate the vehicle negative position as shown (passenger side)



6. Tighten nut to fix negative in position



7. Locate nut as circled (driver side kick panel). Fix ECU model to this point.



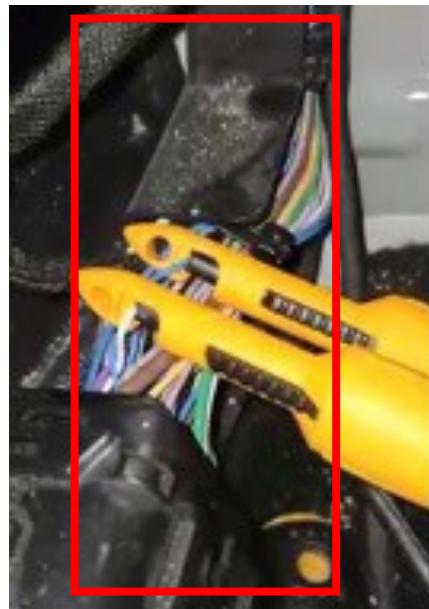
8. Route harness from the chassis to the cabin using the existing grommet near driver side scuff plate.



9. Grommet mentioned in #8



10. Route the harness to the passenger side from this position



11. Find Grey/Blue + Green/Orange twisted wires in the passenger side kick-panel as below



Grey/Blue + Green/Orange - twisted lines

Grey/Blue + Green/Orange - twisted lines in the passenger side kick panel

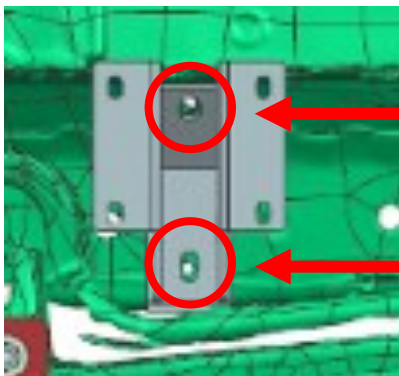
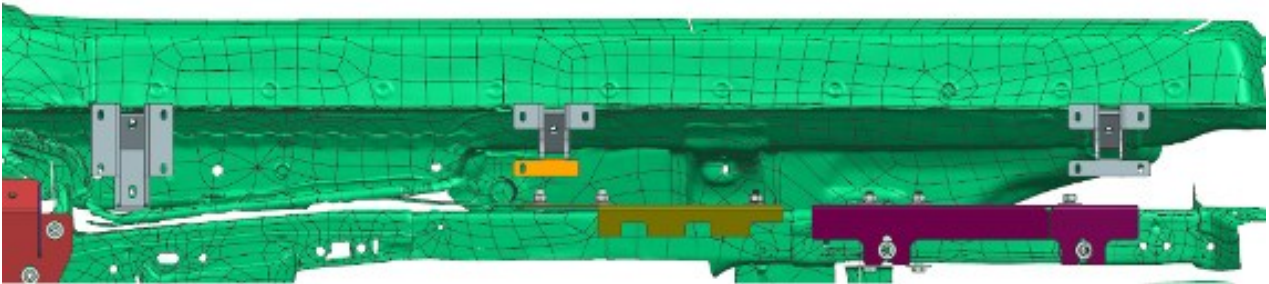
12. Connect wires from vehicle with wires from electric steps by soldering as below: Yellow Wire (from Electric Steps) --- Green/Orange twisted wire from vehicle White Wire (from Electric Steps) --- Grey/Blue twisted wire from vehicle



13. Use electric tape to protect all connectors. Connect the ECU connector with the motor. Place the bracket on the ground, reinsert the fuse. Open and close the doors to check if the motor deploys and retracts correctly.

14. If the motor doesn't work, double check the previous steps or contact our customer care team for assistance

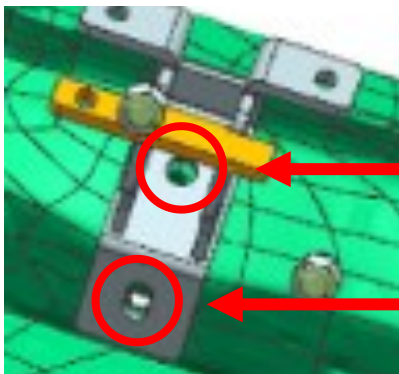
2. Install the left (passenger) side bracket bases to the body



1

2

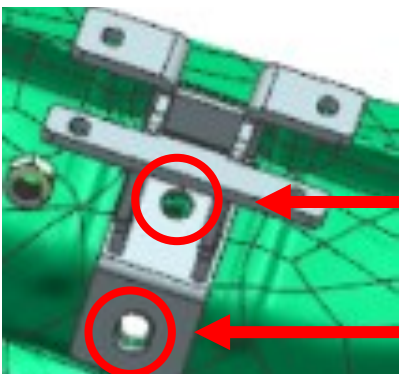
Left-Front



3

4

Left-Middle



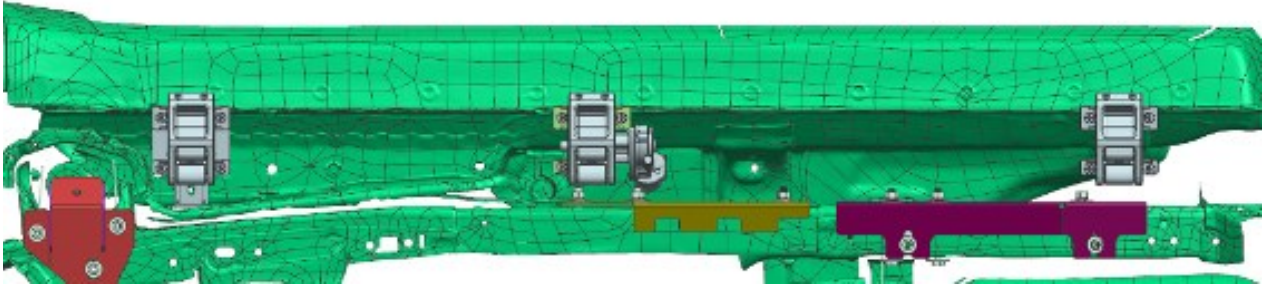
5

2

Left-Rear

For 1 - 6, use M10x30 bolts.. Tighten all

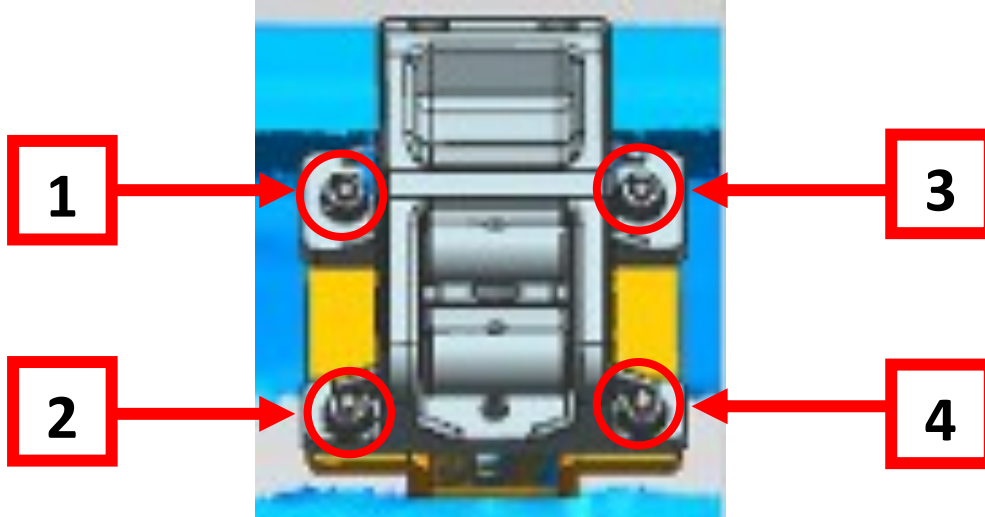
3. Install brackets to the bracket bases



Left-Front

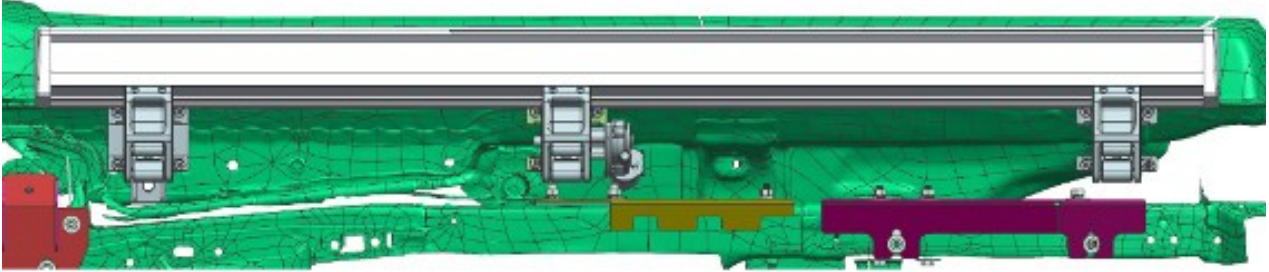
Left-Middle

Left-Rear



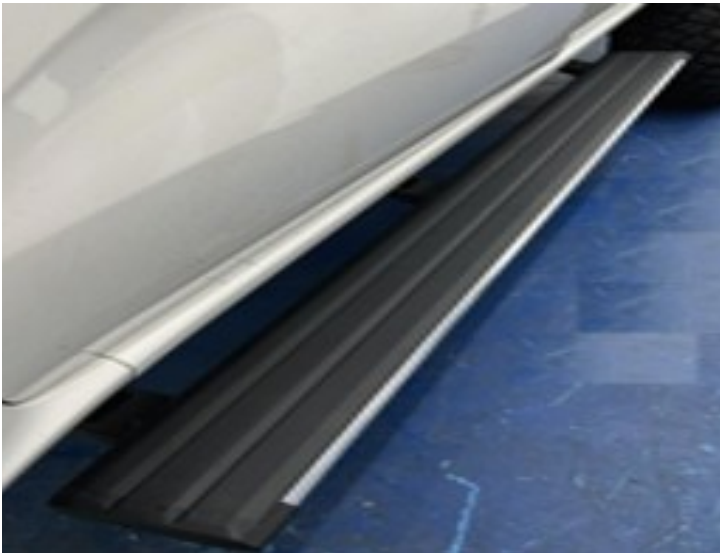
Fix 1.2.3.4 for each bracket with M8x30 carriage bolts. Same for the other two brackets. Important: do not tighten nuts yet, keep them a little loose so that the brackets can be adjusted

4. Install left (passenger) side step



Use M6x25 bolts and spring washers to fix side steps to the brackets. Tighten the bolts.

5. Test and adjust/balance



1. Re-insert the fuse into the wiring harness. Then open and close the doors to check that the steps work correctly. Ensure the steps are free of any obstruction. As they move up and down they will adjust to the correct position themselves .



Tighten all bolts on the 6 brackets. If the side steps are out of alignment, use the U-shaped washers to adjust them.

Automatic power deployment:

The side steps will extend down and out when the door is opened.

Automatic stop:

If an object is in the way of the moving side step, the side step will automatically stop. To reset, clear any obstruction, then simply open and close the door to resume normal operation.

Manually set in the deployed (OUT) position for access to the roof:

Stand on the side step while closing the door. To resume normal operation, open and close the door.

Maintenance:

In adverse conditions, debris such as mud, dirt, and salt may become trapped in the side step mechanism, possibly leading to unwanted noise. If this occurs, avoid spraying the motors directly and after washing, apply silicone spray lubricant to the hinge pivot pins.

Caution! Keep hands and feet away when the side steps are in motion.

Thank you for choosing the OCAM Electric Side Steps. Enjoy!!