



# INSTALLATION INSTRUCTIONS

PART NUMBER: SSE2-Y62

APPLICATION: FOR NISSAN PATROL Y62, 2012-On

FITTING TIME: 4 hours

OCAM 4x4 Accessories  
31 Shirley Way, Epping, VIC 3076  
Telephone (03) 9357-0306  
Email: [hello@ocam.com.au](mailto:hello@ocam.com.au)  
ABN: 33166112278

## IMPORTANT INFORMATION

- Always wear safety glasses and hearing protection.
- Make sure work area is kept clean at all times.
- Check that all components, as listed, are present.
- Thoroughly read all instructions.
- This product or its fasteners must not be modified in any way.
- These instructions are accurate as at the revision date and do not take into account any changes made by the vehicle manufacturer to vehicle design after the revision date, or other accessories that are or have been fitted to the vehicle.
- It is the responsibility of the installer to confirm correct operation/clearance of all components.
- All holes drilled must have all burrs and swarf removed then coated with a suitable rust preventative paint.
- Ensure that all hardware is fastened to torque list as detailed in these instructions.
- On completion of the job, these instructions are to be given to the customer.

## PRODUCT CARE

- To maintain the appearance of the product, wash and dry regularly using a quality car wash.
- The product should be periodically checked for tightness.

Torque Settings		
BOLT SIZE mm	TORQUE Nm	TORQUE ft.lb
M5	5	4
M6	9	7
M8	22	16
M10	44	32
M12	77	57

## Tools Required

- |  |  |
|--|--|
| <ol style="list-style-type: none"> <li>1. </li> <li>2. </li> <li>3. </li> <li>4. </li> </ol> | <br><br><br> |
|--|--|

# COMPONENTS LIST



ECU



Front bracket connector-2PCS



Middle bracket connector-2PCS



Rear bracket connector-2PCS



Idler bracket - 4PCS



Wire harness: one set for motor power and signal



M8x35 socket cap bolt 12 PCS



M6x25 socket cap bolt 12 PCS



M8 washer 12 PCS



M6 spring washer 8PCS



U-shaped washers 10 PCS



Motor bracket - 2PCS



OBD Kit 1 Set



Plastic line 1 PCE



Cable ties 20PCS



Side Steps 2PCS



1. Open the engine compartment and locate the battery



2. Remove the fuse from the supplied wiring harness



3. Connect the positive wire (red with fuse) to the vehicle battery-positive terminal. Caution: tighten the battery nut securely.



4. Locate the rubber grommet in the fire-wall to get through to the cabin, passenger side



5. Route the left hand motor harness through the grommet as shown



6. Connect negative wire to the negative of the vehicle, e.g as shown



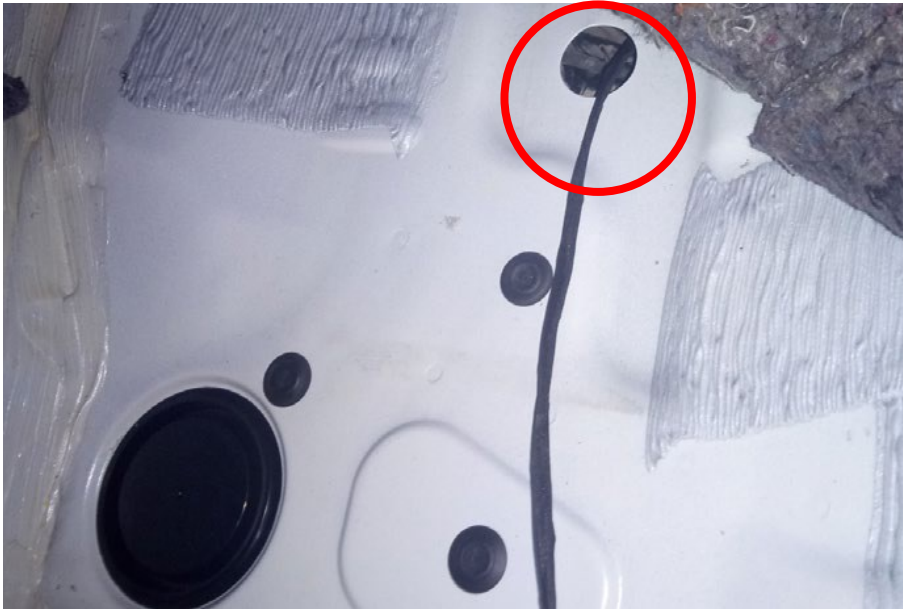
7. Locate the original M6 bolt hole, as shown in the left (passenger) kick-panel



8. Mount the ECU module to this point. Use an M6 bolt



9. Lift the carpet front passenger side



10. Route the harness to the chassis through this grommet



11. Route the right (driver) side harness under the dash to the driver side



12. Lift the carpet on driver side. Route the harness through this grommet to the chassis



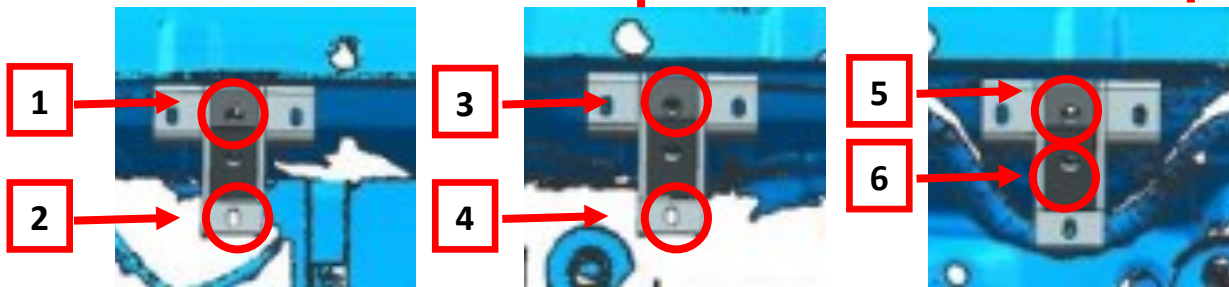
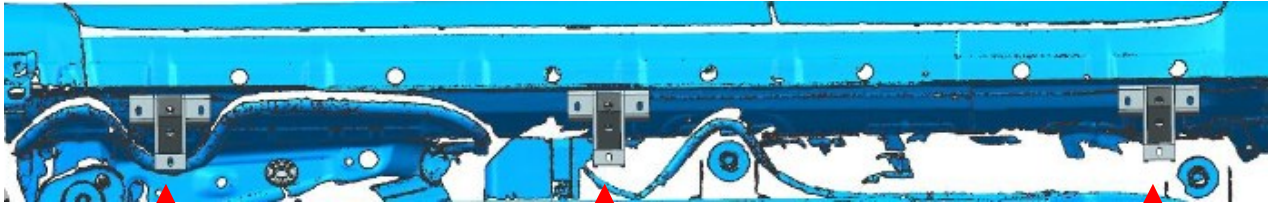
13. Locate this module at the passenger side



14. Remove the plug and insert the supplied harness. Piggy-back re-insert the factory harness

2. Install the bracket connectors to the right (driver) side.

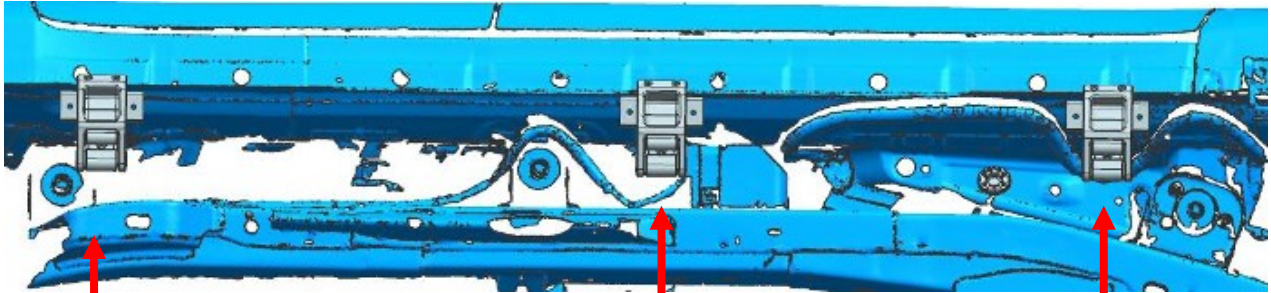
FRONT OF VEHICLE



For 1 - 6 use M8x35 socket cap bolts to fix

3. Install the brackets to the right (driver) side. Then do the same for the passenger side.

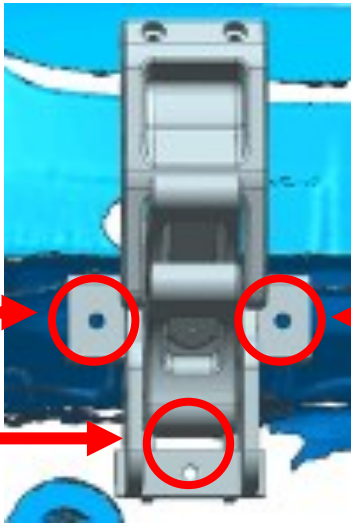
VEHICLE FRONT



RR-idler bracket

RM-motor bracket

RF-Idler bracket



1

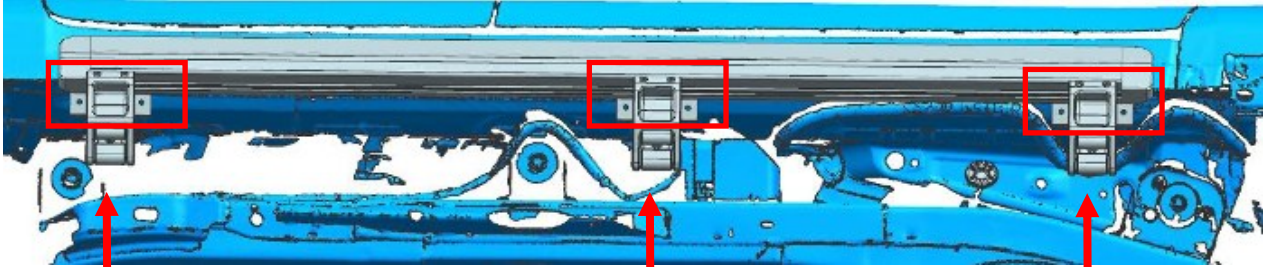
2

3

For 1-3, use M8x30 bolts to fix. Do the same for all 3 brackets

**KEEP ALL BRACKET BOLTS SLIGHTLY LOOSE, SO THAT THE BRACKETS CAN BE ADJUSTED WHEN BALANCING THE STEPS**

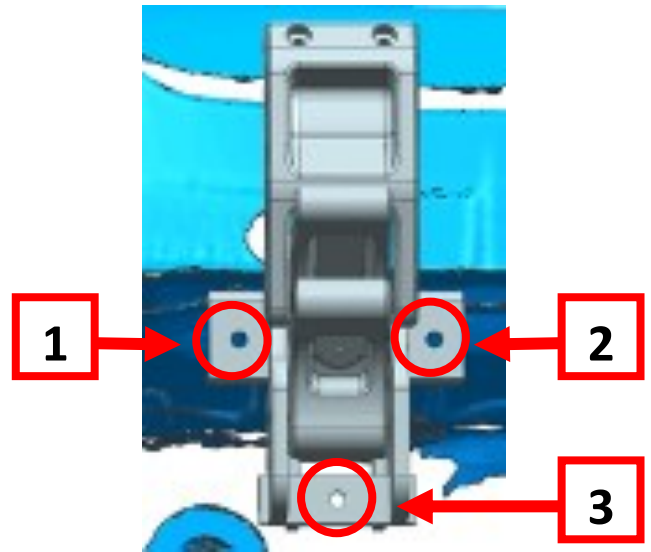
## 4. Install left (passenger) side step



Use M6x25 socket cap bolts to fix running boards to the brackets..

**TIGHTEN BOLTS!!**

## 5. Test and adjust side steps alignment/balance



1. Re-insert the fuse into the wiring harness. Then open and close the doors to check that the steps work correctly. Ensure the steps are free of any obstruction. As they move up and down they will adjust to the correct position themselves.

**2. TIGHTEN ALL BOLTS ON THE 6 BRACKETS (3X6=18).**  
If the side steps are out of alignment, use the U shaped washers to adjust them.

6. Check that the side steps are working correctly upon opening and closing the doors. The installation is now complete. Thank you for choosing the OCAM Electric Side Steps. Enjoy!!



## **Automatic power deployment:**

The side steps will extend down and out when the door is opened.

## **Automatic stop:**

If an object is in the way of the moving side step, the side step will automatically stop. To reset, clear any obstruction, then simply open and close the door to resume normal operation.

## **Manually set in the deployed (OUT) position for access to the roof:**

Stand on the side step while closing the door. To resume normal operation, open and close the door.

## **Maintenance:**

In adverse conditions, debris such as mud, dirt, and salt may become trapped in the side step mechanism, possibly leading to unwanted noise. If this occurs, avoid spraying the motors directly and after washing, apply silicone spray lubricant to the hinge pivot pins.

Caution! Keep hands and feet away when the side steps are in motion.

Thank you for choosing the OCAM Electric Side Steps. Enjoy!!