



## INSTALLATION INSTRUCTIONS

ITEM NO: NB-MT

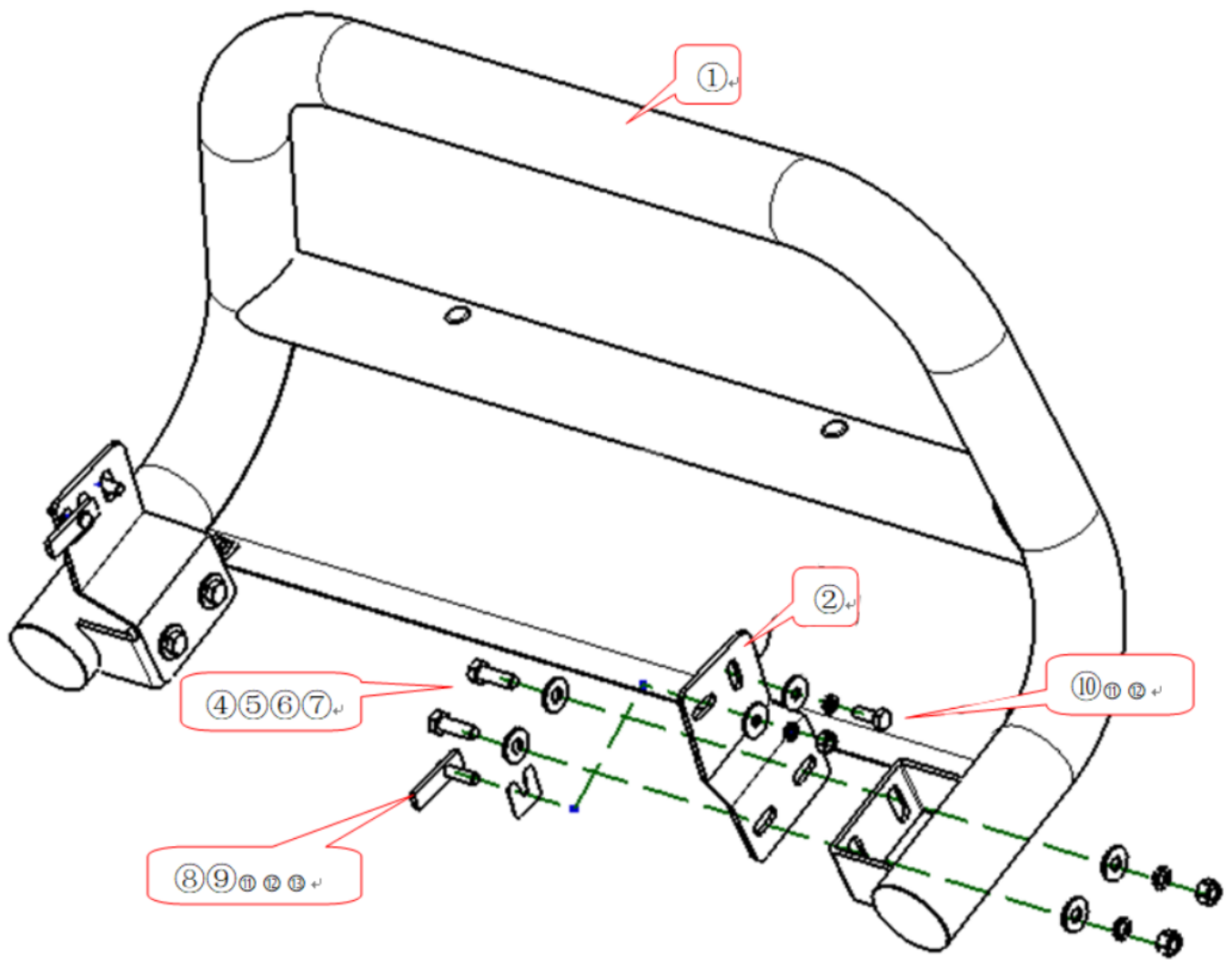
DESCRIPTION: 3" OCAM Nudge Bar For Mitsubishi Triton ML MN 2006-15 Airbag Compliant

- Please read the installation instructions before installing this accessory. Take care to protect your vehicle and prevent any scratches during installation.
- To ensure ongoing safe use, you may need to periodically re-tighten all hardware after installation.
- Installation pictures are only for your reference. There may be some differences between pictures and parts. These will not affect the fitting.

### PART LIST

NO.	NAME	QTY	REMARK	NO.	NAME	QTY	REMARK
①	Bull Bar	1		⑧	T Bolt	2	M10*35
②	Bracket 1 (right)	1		⑨	Plastic Fixture	2	Φ10
③	Bracket 1 (left)	1		⑩	Hexagon Bolt(fine thread)	2	M10*25
④	Hexagon Bolt	4	M12*35	⑪	Large Washer	4	φ10*30*2.5
⑤	Extra Large Washer	10	φ12*30*3.0	⑫	Spring Washer	4	φ10
⑥	Spring Washer	4	φ12	⑬	Hexagon Nut	2	M10
⑦	Hexagon Nut	4	M12				

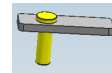
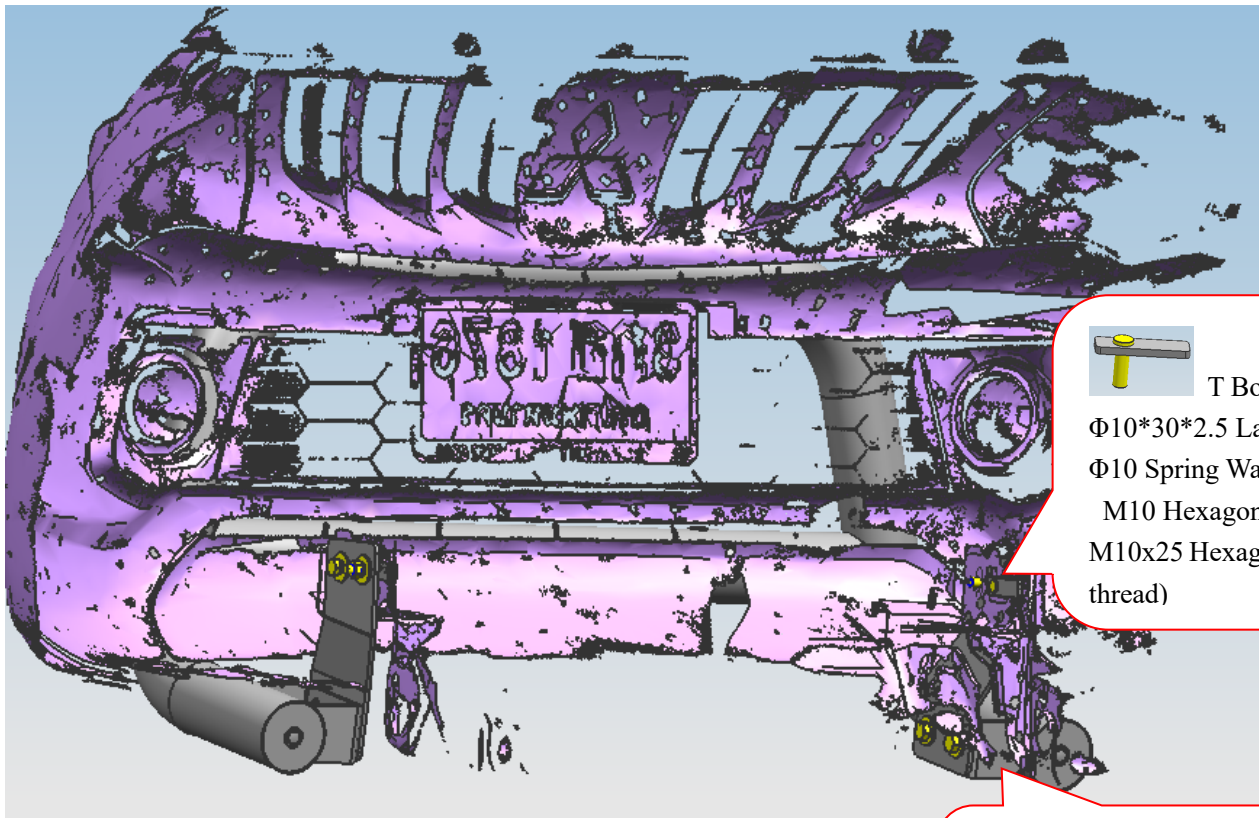
### INSTALLATION PICTURE



## INSTALLATION PROCEDURES

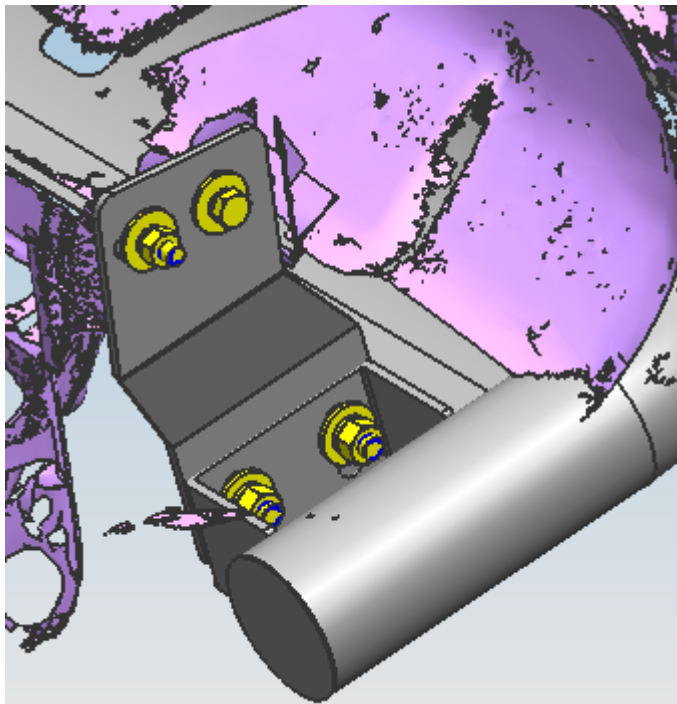
Step 1: Refer to Part List and Installation Picture to check that all hardware is included.

Step 2: Refer to the following picture to install all brackets.



T Bolt

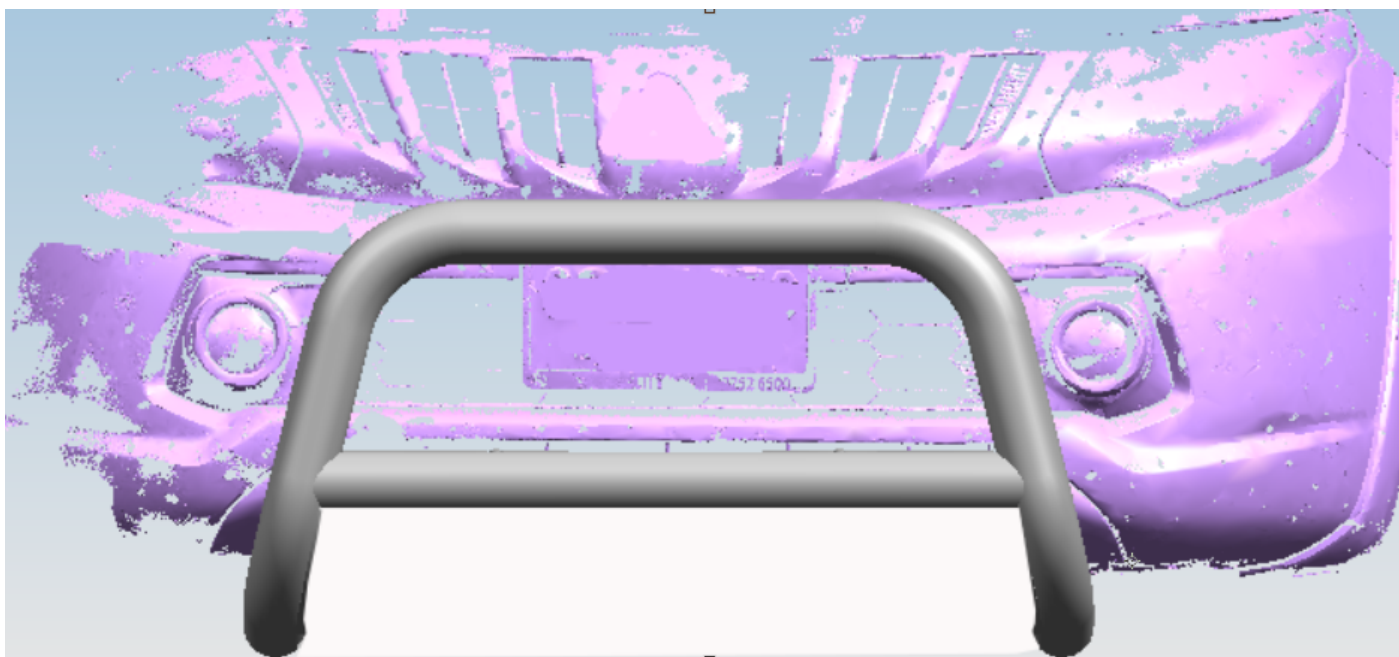
$\Phi 10 \times 30 \times 2.5$  Large Washer  
 $\Phi 10$  Spring Washer  
 M10 Hexagon Nut  
 M10x25 Hexagon Bolt(fine thread)



M12x35 Hexagon Bolt  
 $\phi 12 \times 30 \times 3.0$  Large Washer  
 $\phi 12$  Spring Washer  
 M12 Hexagon Nut

Step 3: Install the brackets as shown in the image above and adjust to the correct position.

Step 4: Check all hardware has been fitted correctly and then tighten.



Disclaimer: Any issues or losses related to incorrect installation are beyond our company's quality assurance.