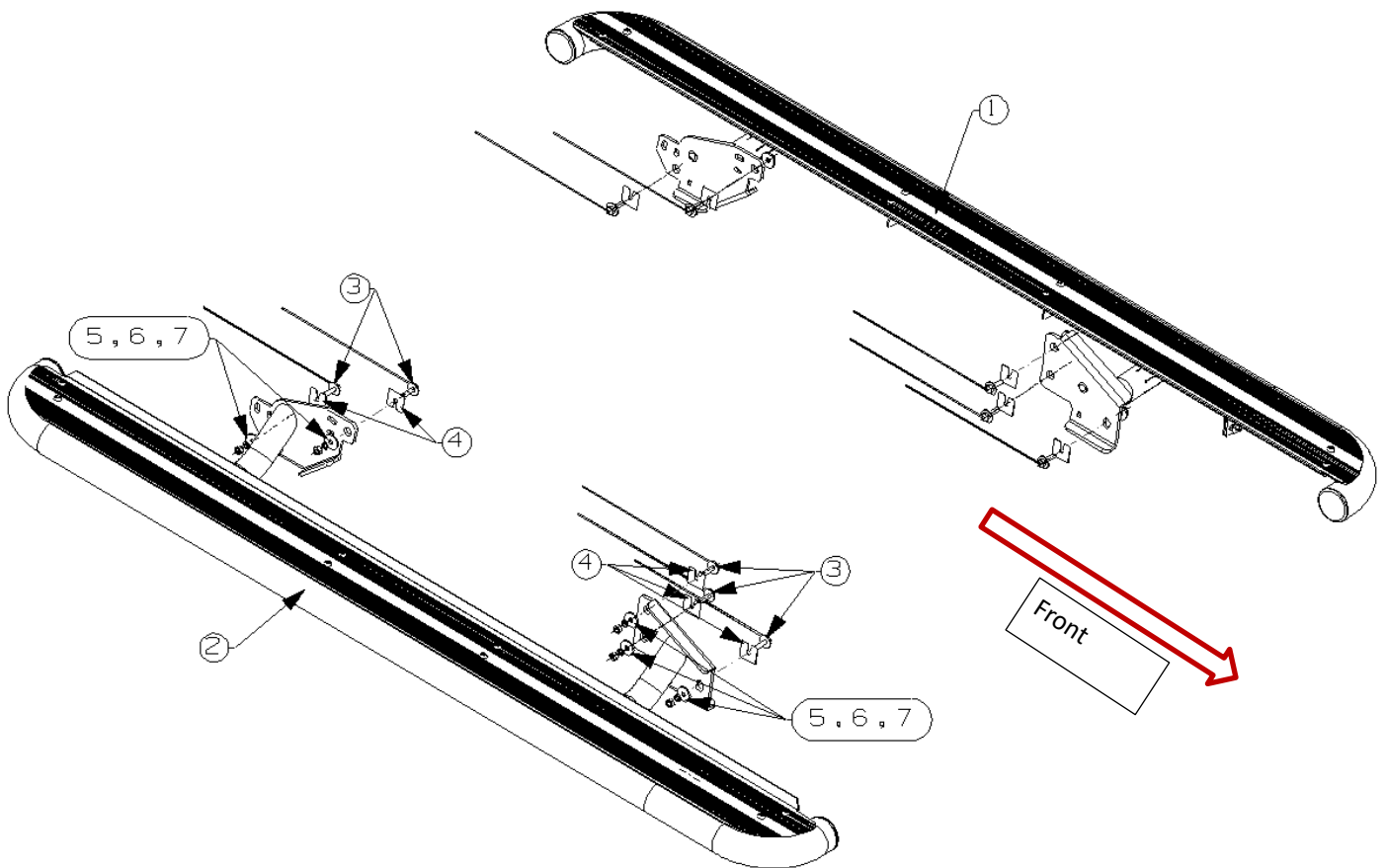


Description :	OCAM Heavy Duty Steel Side Steps for Toyota Landcruiser 200 Series, 2007-Current
Model :	Toyota Landcruiser 200 Series, 2007-Current
Item NO. :	SS2-200



Before Installation

- Please read the instruction carefully. They will also help you to avoid scratches or other potential damage to your vehicle.
- All images are for reference only and may vary slightly with the actual product you've received.

Care and Cleaning




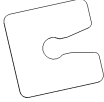
- Mild soap may be used also to clean the side steps.
- Please periodically check and retighten all the hardware and keep your investment clean for a fresh look.

Fitting instructions

Standard locking torque

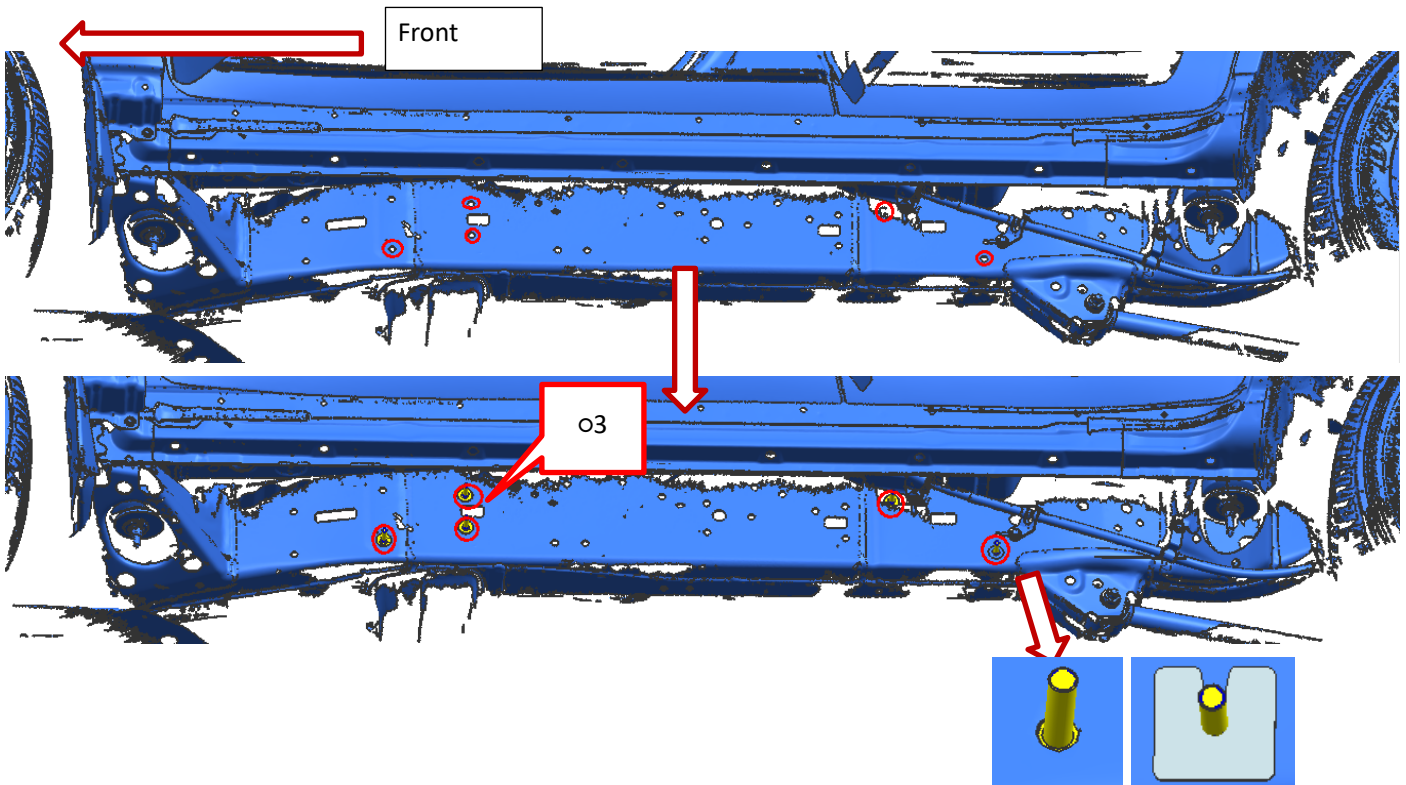
M10 - 80 Nm | M12 - 90 Nm

PARTS LIST

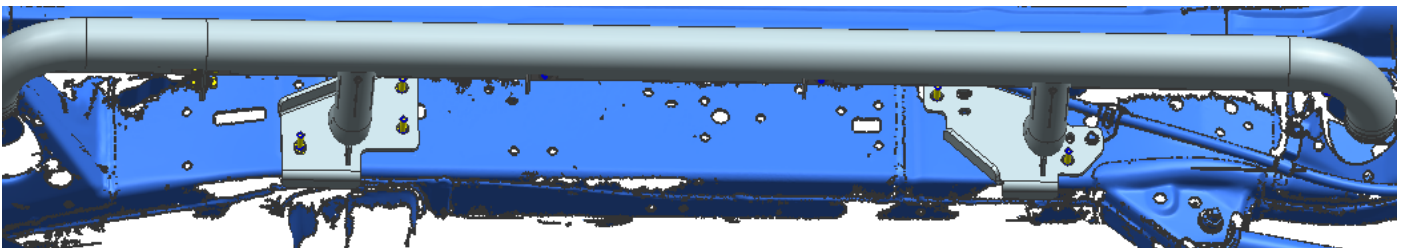
Item	Item NO.	Description	Qty	Item	Item NO.	Description	Qty
o1	200358585	 Main step LHS	1	o2	200358613	 Main step RHS	1
o3	200096933	 Bolt on wire M8_30	10	o4	200193010	 M8 plastic clip	10
Hardware kit							
Item	Item NO.	Description					Qty
o5	3000147	Spring washer M8					10
o6	3000415	Flat washer M8(8x28x3mm)					10
o7	3001481	Hex nut M8					10

Fitting Instruction

1. Please locate the red-circled mounting holes and place the Bolt on wire (item 3), as shown.
2. Use M8 plastic clips (item 4) to hold the bolt from falling in to the chassis, as shown.



3. Fit the side step to the chassis



4. Fasten the side step with flat washers, spring washers and nuts provided.

