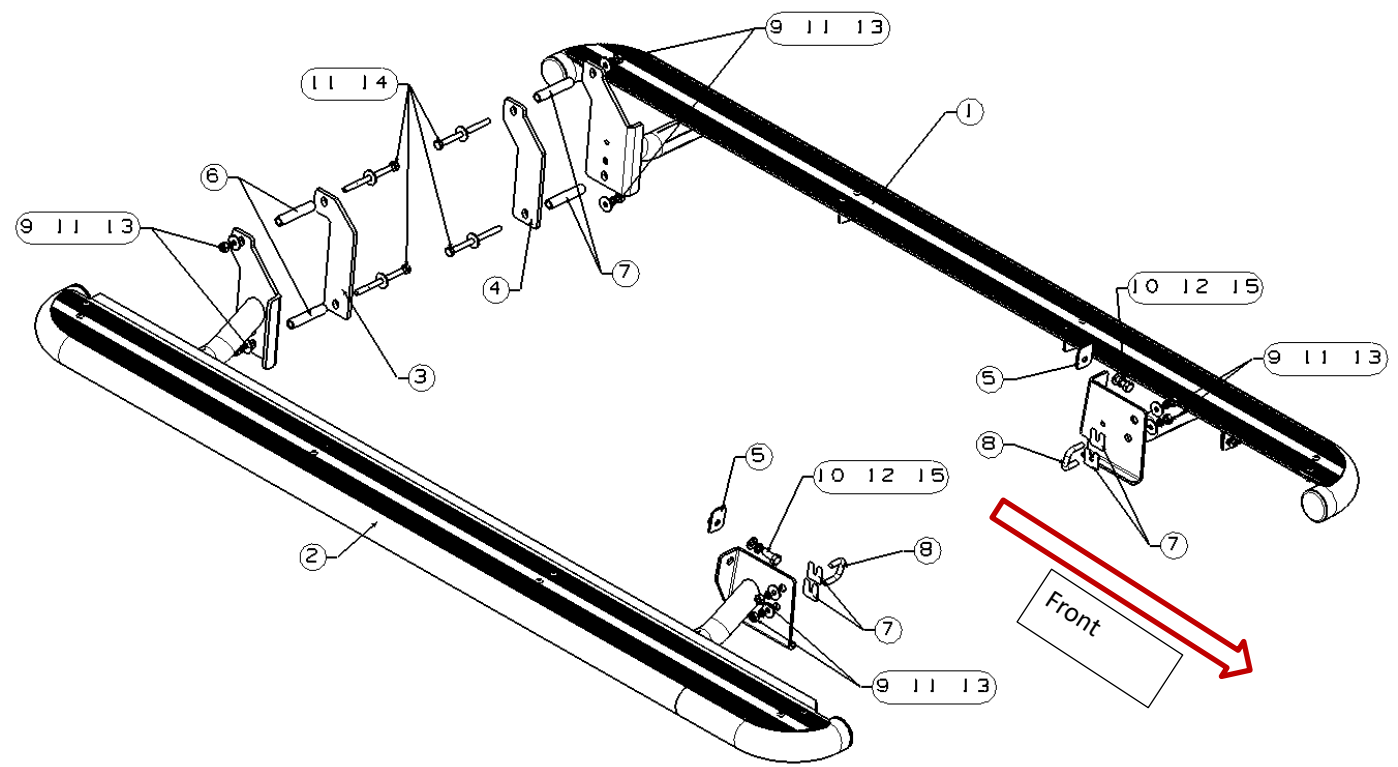


Description :	OCAM Heavy Duty Steel Side Steps
Model :	Holden Colorado RG 2012-Current / Isuzu D-MAX 2012-07/2020
Item NO. :	SS2-COLORADO-16



Before Installation

- Please read the instruction carefully. They will also help you to avoid scratches or other potential damage to your vehicle.
- All images are for reference only and may vary slightly with the actual product you've received.

Care and Cleaning





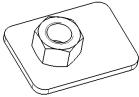
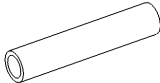

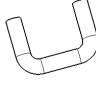
- Mild soap may be used also to clean the side steps.
- Please periodically check and retighten all the hardware and keep your investment clean for a fresh look.

Fitting Instructions

Standard locking torque

M10 - 80 Nm | M12 - 90 Nm

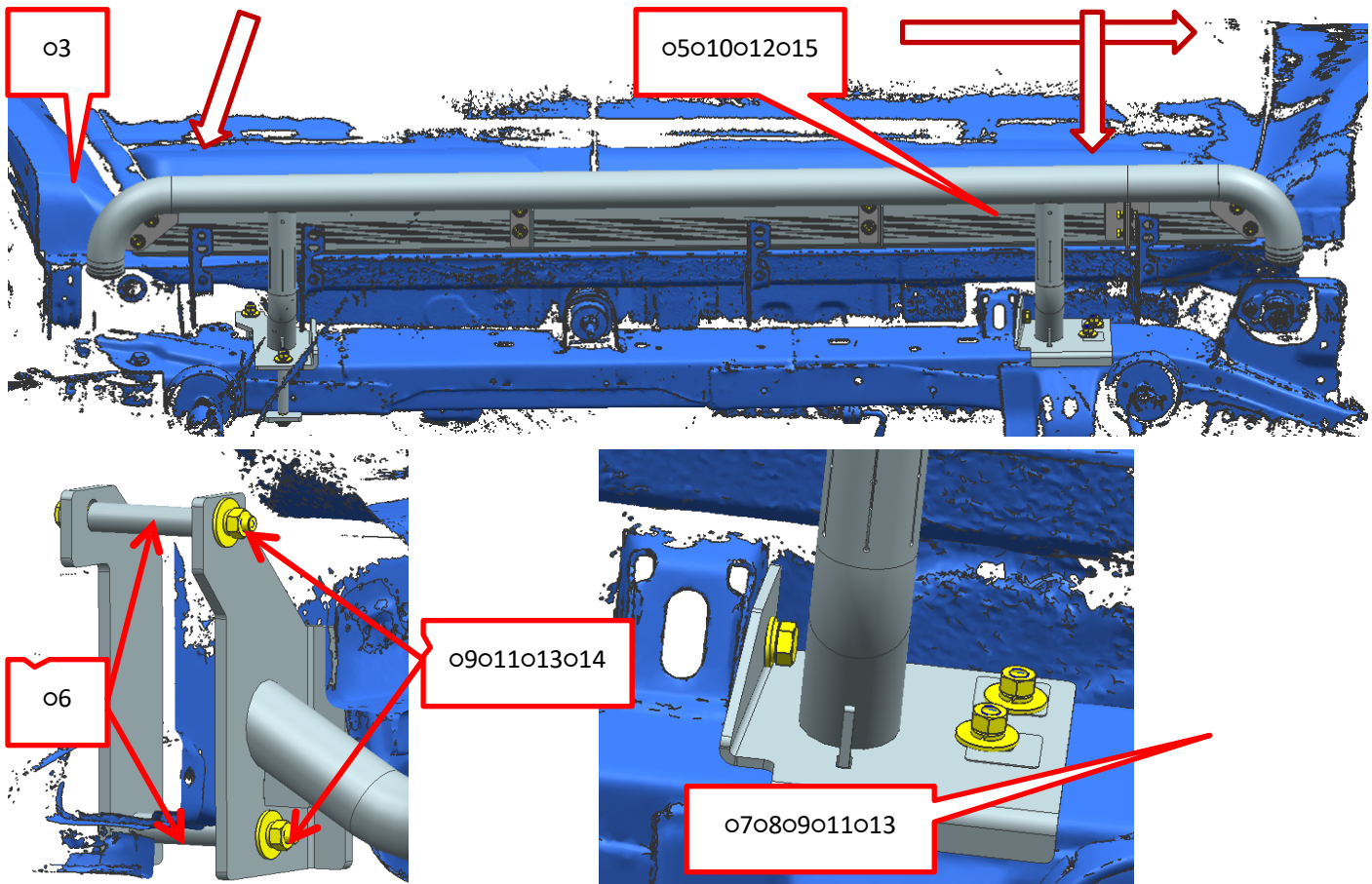
PARTS LIST

Item	Item NO.	Description	Qty	Item	Item NO.	Description	Qty
o1	200305166	 Main step LHS	1	o2	200305167	 Main step RHS	1
o3	200305317	 Spacer plate 1	1	o4	200305318	 Spacer plate 2	1
o5	200305319	 Nut on plate	1	o6	200314818	 Crush tube	1
o7	200193009	 M10 plastic clip	4	o8	200069775	 U-bolt M10	2

Hardware kit

Item	Item NO.	Description	Qty
o9	3000160	Spring washer M10	8
o10	3000171	Spring washer M12	2
o11	3000245	Flat washer M10x30x2.5mm	12
o12	3000333	Flat washer M12(12x24x2.5mm)	2
o13	3001491	Hex bolt M10	8
o14	3002328	Hex bolt M10x130x35	4
o15	3002805	Hex bolt M12x30	2

Fitting Instructions



1. Place the o8U-bolt inside the chassis for the front weld mount & use o7 M10 plastic clip to hold the U-bolt in place. Fasten the U-bolt using o5Nut on plate
2. Pre-load o9 Spring washer M10 o11 Flat washer M10x30x2.5mm o13 Hex bolt M10 to the chassis holes on o8U-bolt. Fasten after fitting the rear weld mount
3. Place the rear weld mount against the chassis & mount it with o3 Spacer plate 1 o6 Crush tube o9 Spring washer M10 o11 Flat washer M10x30x2.5mm o13 Hex bolt M10 o14 Hex bolt M10x130x35
4. Pre-load o10 Spring washer M12o12 Flat washer M12(12x24x2.5mm) o15 Hex bolt M12x30 to the chassis holes and fasten the front weld mount with o5Nut on plate
5. Adjust the steps position correctly and then fasten all the bolts & nuts