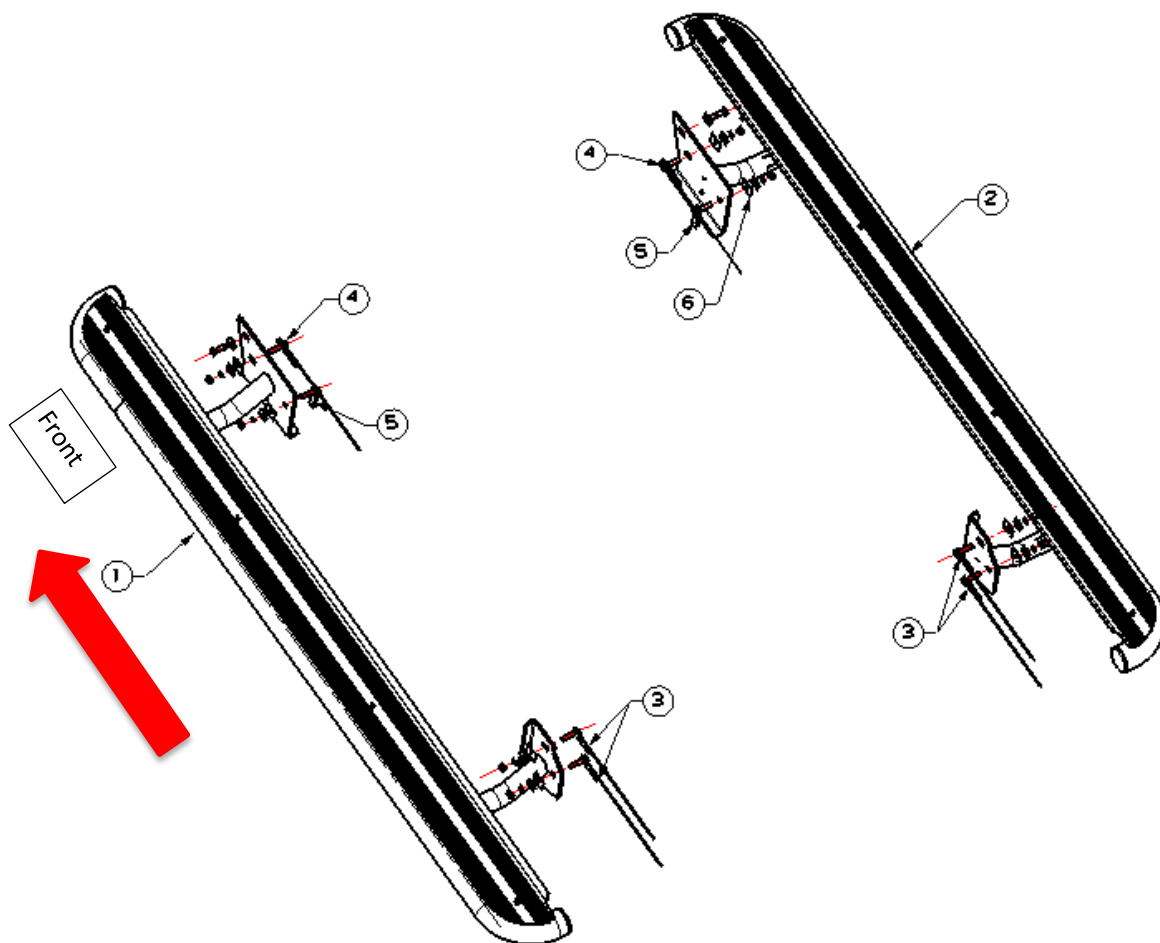


# Fitting Instructions

Description :	OCAM Heavy Duty Steel Side Steps
Model :	Isuzu D-MAX 08/2020-Current, Dual Cab
Item NO. :	SS2-DMAX-21



## Before Installation

- Please read the instruction carefully. They will also help you to avoid scratches or other potential damage to your vehicle.
- All images are for reference only and may vary slightly from the actual product you've received.

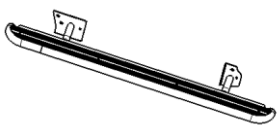



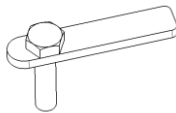

## Care and Cleaning

- Mild soap may be used also to clean the side steps.
- Please periodically check and retighten all the hardware and keep your investment clean for a fresh look.

# Fitting Instructions

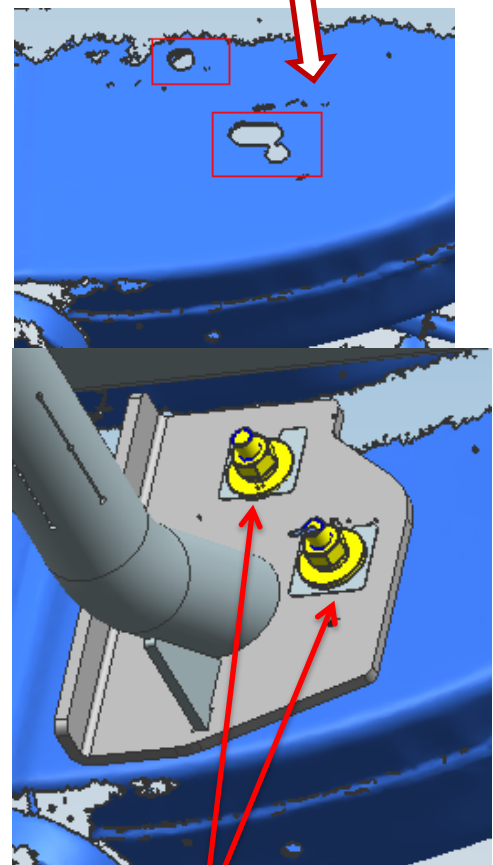
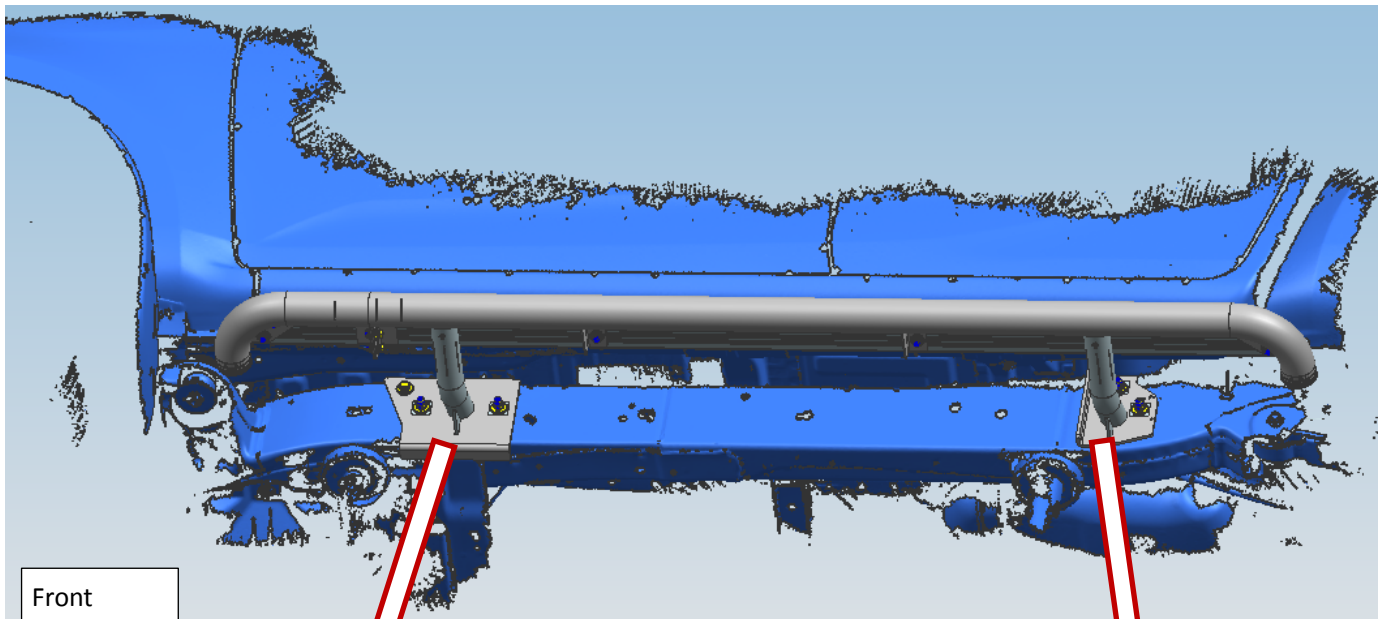
Standard locking torque  
M10 - 80 Nm

## PARTS LIST

Item	Item NO.	Description	Qty	Item	Item NO.	Description	Qty
o1	200415493	 Main step LHS	1	o2	200415494	 Main step RHS	1
o3	200440860	 Bolt on wire M10x40 (3mm)	4	o4	200415761	 Bolt on wire M10x40 (5mm)	2
o5	TY001178	 T-Bolt M10x40	2	o6	200193009	 M10 Plastic clip	8
<b>Hardware kit</b>							
Item	Item NO.	Description					Qty
o7	3000245	Flat Washers M10(10x30x2.5mm)					10
o8	3000160	Spring Washers M10					10
o9	3001491	Hex Nut M10					8
o10	3003027	Hex Head Bolt (Full thread) M10_1.25_35					2

# Fitting Instructions

Fiting Instruction : All steps for fitting the LHS & RHS steps are identical.



**Above shown as for RHS**

# Fitting Instructions

## Steps:

**#1: As shown above, please remove the OEM zip tapes & OEM bolts from the the chassis. Please keep the OEM bolts.**

**#2: Please insert item #3 & #4 & #5 into chassis holes as shown with item #6 to hold the bolts.**

**#3: Please put the side steps in place to the chassis. And hand fasten the side steps with item #7 # 8 #9 #10 .**

**#4: For LHS step, please use item #16 to fasten the side step to the chassis captive nut .**

**#5: For RHS step, please insert the item #3 into the chassis hole. And fasten the side step with item #9 #10 #11.**

**#6: Adjust the side step to the best position and tighten up all the fasteners with tools.**

**Thank you**