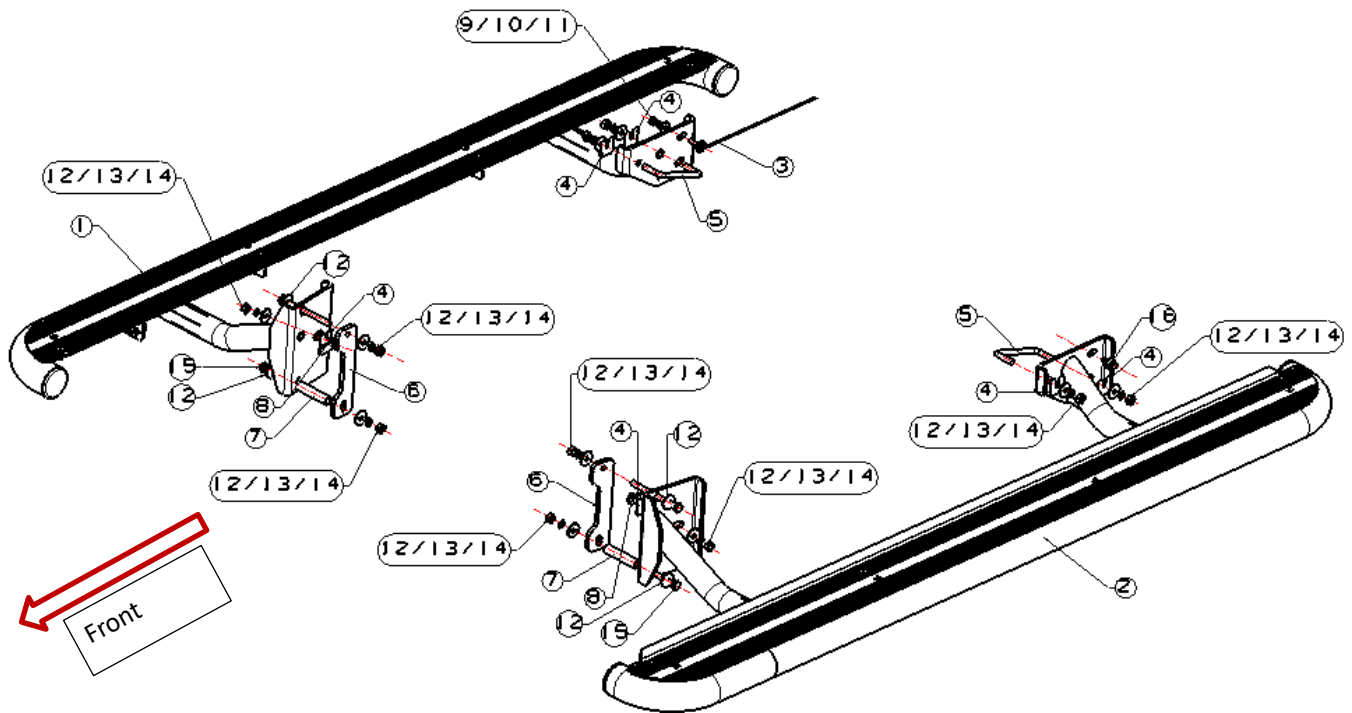


Fitting Instructions

Description :	OCAM Heavy Duty Steel Side Steps
Model :	Mitsubishi Triton MQ / MR 2015+
Item NO. :	SS2-MT-18



Before Installation

- Please read the instruction carefully. They will also help you to avoid scratches or other potential damage to your vehicle.
- All images are for reference only and may vary slightly from the actual product you've received.

Care and Cleaning



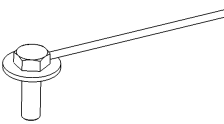


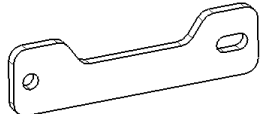
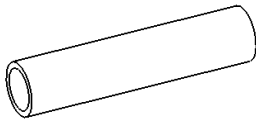
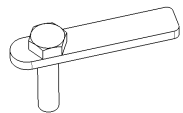
- Mild soap may be used also to clean the side steps.
- Please periodically check and retighten all the hardware and keep your investment clean for a fresh look.

Standard locking torque

M10 - 80 Nm

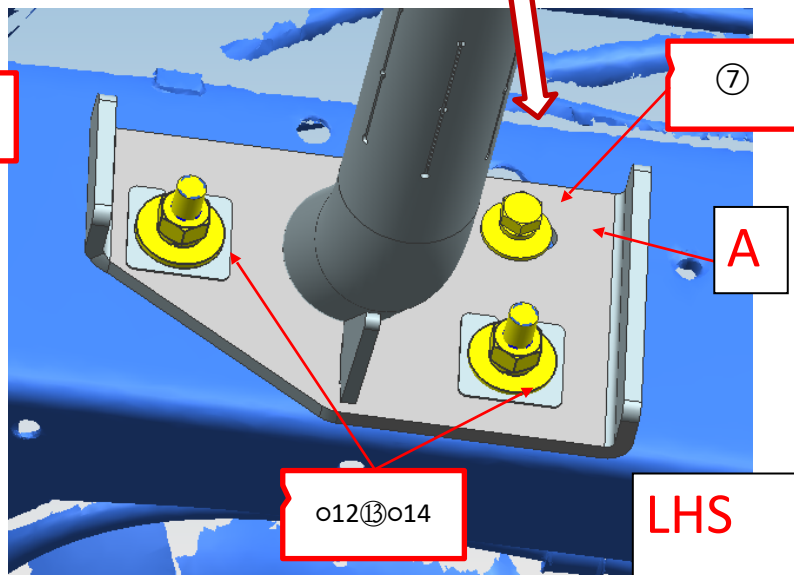
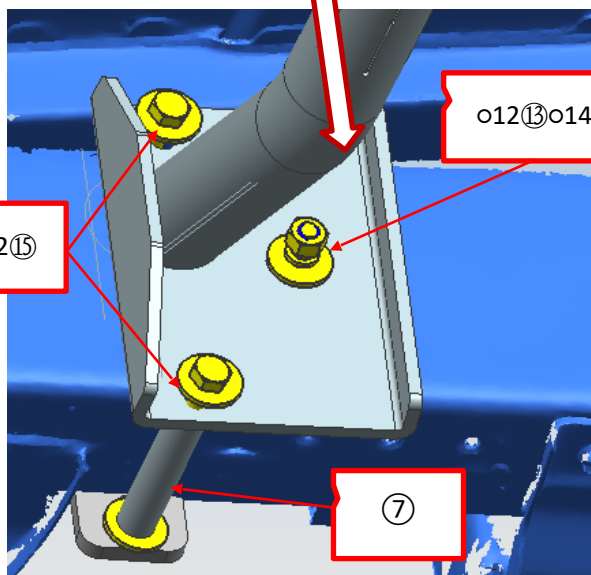
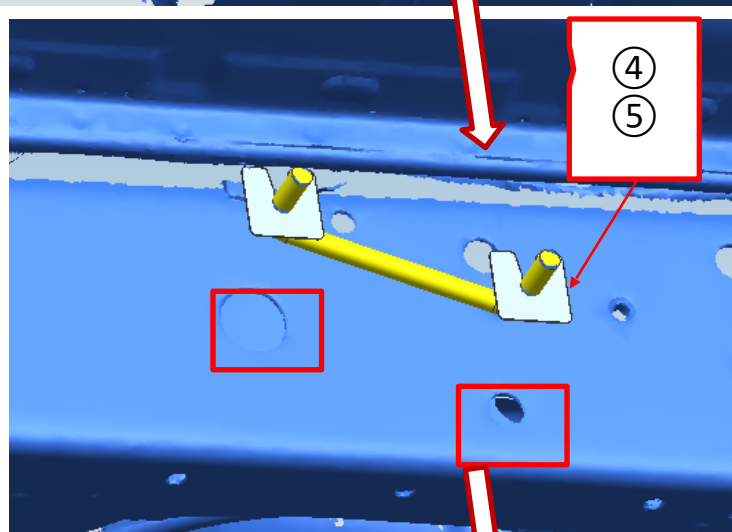
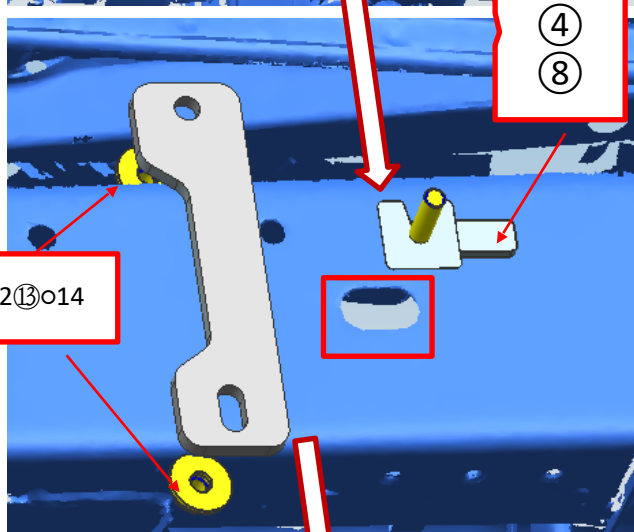
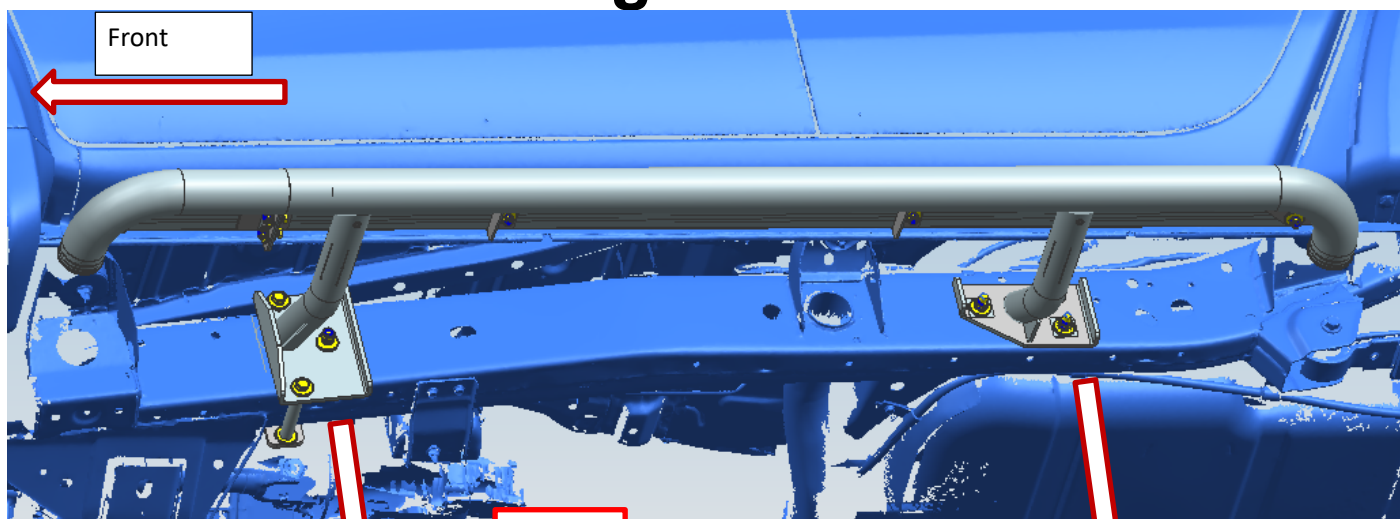
Fitting Instructions

PARTS LIST

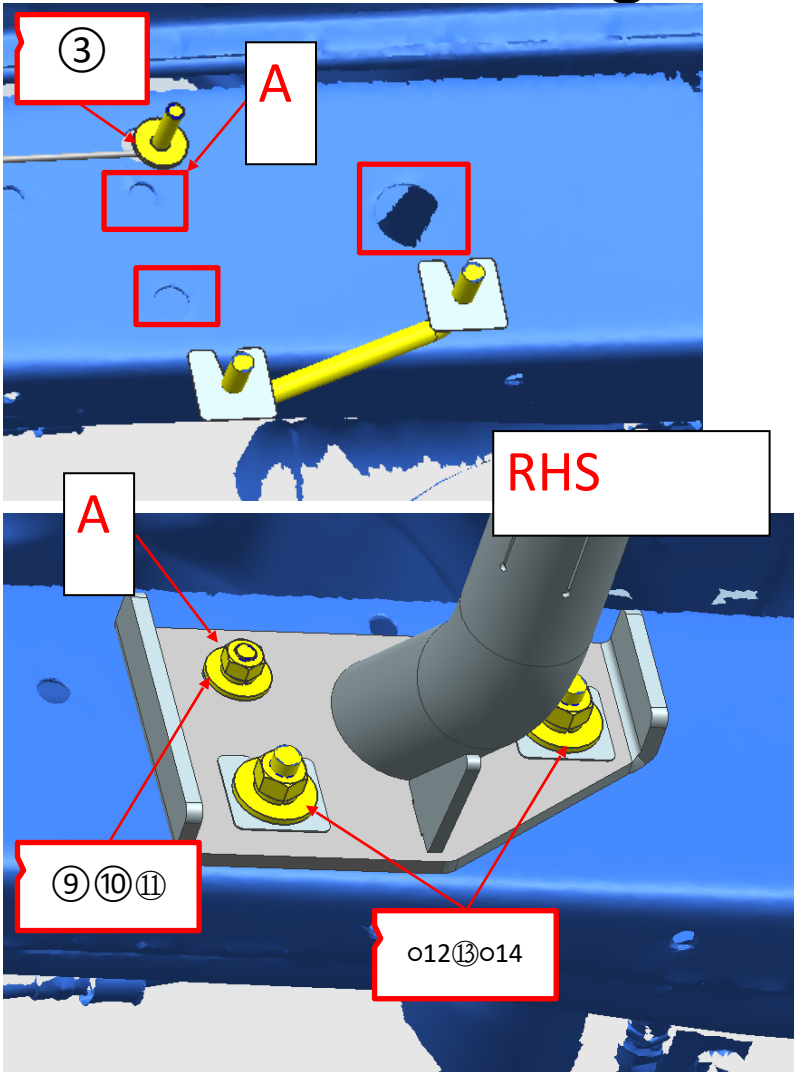
Item	Item NO.	Description	Qty	Item	Item NO.	Description	Qty
o1	200353831	 Main step LHS	1	o2	200353836	 Main step RHS	1
o3	200096933	 Bolt on wire M8*30	1	o4	200193009	 M10 Plastic clip	6
o5	200248987	 U-Bolt M10	2	o6	200358036	 Plate	2
o7	200373597	 Crush tube (80mm)	2	o8	TY001172	 T-Bolt M10*40	2
Hardware kit							
Item	Item NO.	Description	Qty				
o9	3000147	Spring Washer D8	1				
o10	3000238	Flat Washer D8(8x24x2mm)	1				
o11	3001481	Hex Nut M8	1				
o12	3000245	Flat Washers D10(10x30x2.5mm)	14				
o13	3000160	Spring Washers D10	10				
o14	3001491	Hex Nut M10	10				
o15	3002785	Hex Head Bolt (Full thread) M10_120	4				
o16	3006212	Hex Head Bolt, Spring Washer and Flat Washer assembly	1				

Fitting Instructions: Other than Section A, all steps for fitting the LHS & RHS steps are the same.

Fitting Instructions



Fitting Instructions



Steps:

- #1: As shown above, please remove the OEM zip tapes & OEM bolts from the rear of the chassis. Please keep the OEM bolts.
- #2: Insert item #5 & #8 into chassis holes as shown with item #4 to hold the bolts in place.
- #3: Position the side steps to the chassis and hand fasten the side steps the using items #7 # 12 #13 #14 #15.
- #4: For LHS step, use item #16 to fasten the side step to the chassis captive nut .
- #5: For RHS step, insert the item #3 into the chassis hole and fasten the side step with item #9 #10 #11.
- #6: Adjust the side step to the best position and securely tighten all fasteners.

Thank you