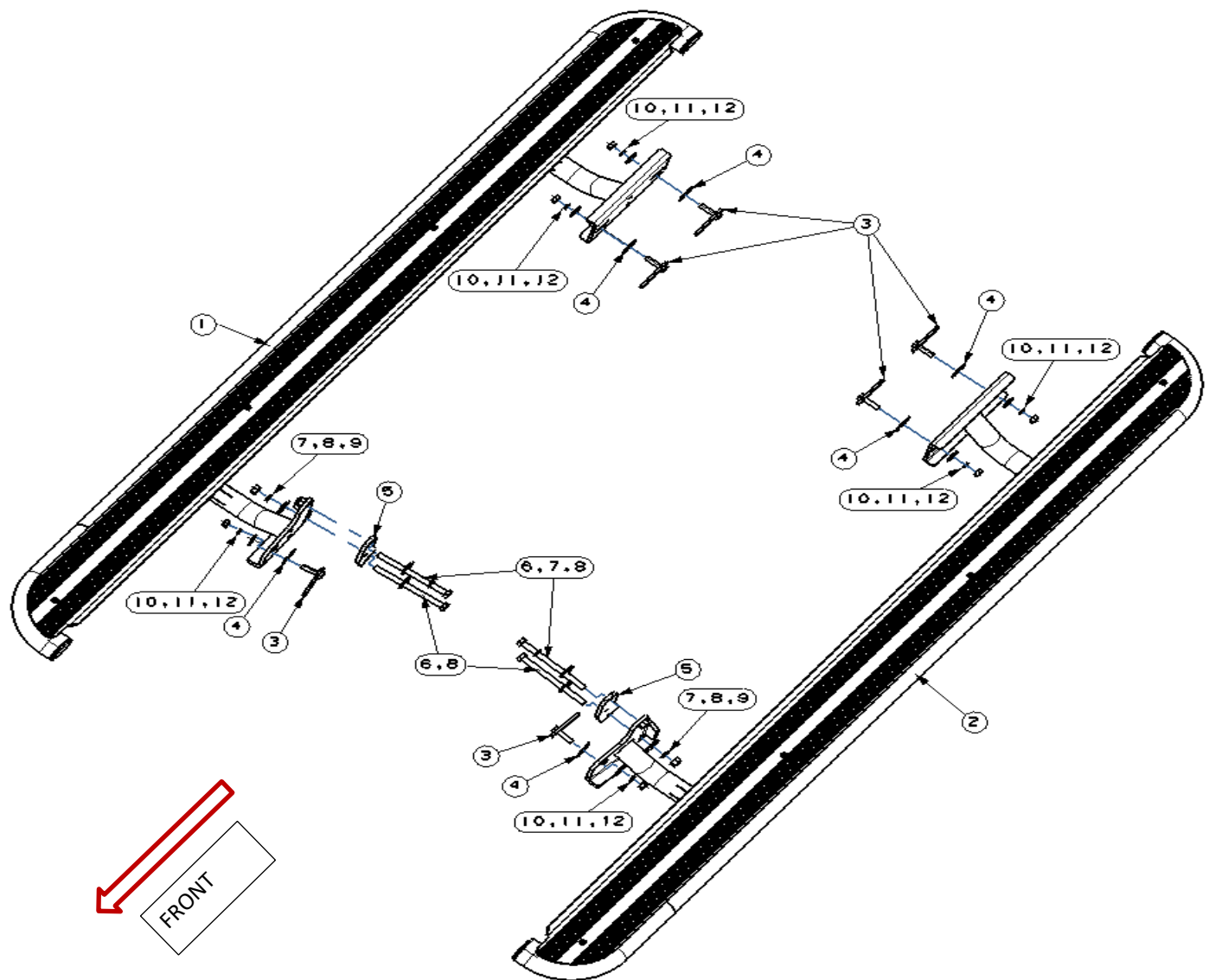


Fitting instruction

Description:	OCAM Heavy Duty Steel Side Steps
Model:	Ford Ranger PX 2012-Current & Mazda BT-50
Item NO.:	SS2-RANGER-12



Fitting instruction

Before Installation

- Please read the instruction carefully. They will also help you to avoid scratches or other potential damage to your vehicle.
- All images are for reference only and may vary slightly with the actual product you've received.


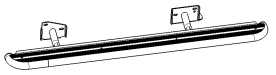
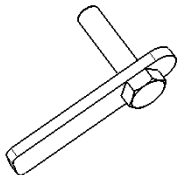
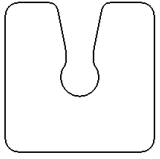
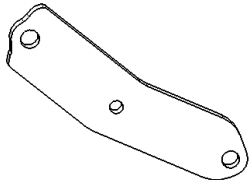
Care and Cleaning

- Mild soap may be used also to clean the side steps.
- Please periodically check and retighten all the hardware and keep your investment clean for a fresh look.

Standard locking torque

M10 - 80 Nm

Parts list

Item	Item NO.	Description	Qty	Item	Item NO.	Description	Qty
o1	200305364	 Main step RHS	1	o2	200305365	 Main step LHS	1
o3	TY001178	 T-bolt M10x40	6	o4	200193009	 M10 plastic clip	6
o5	200314958	 Spacer Plate	2				

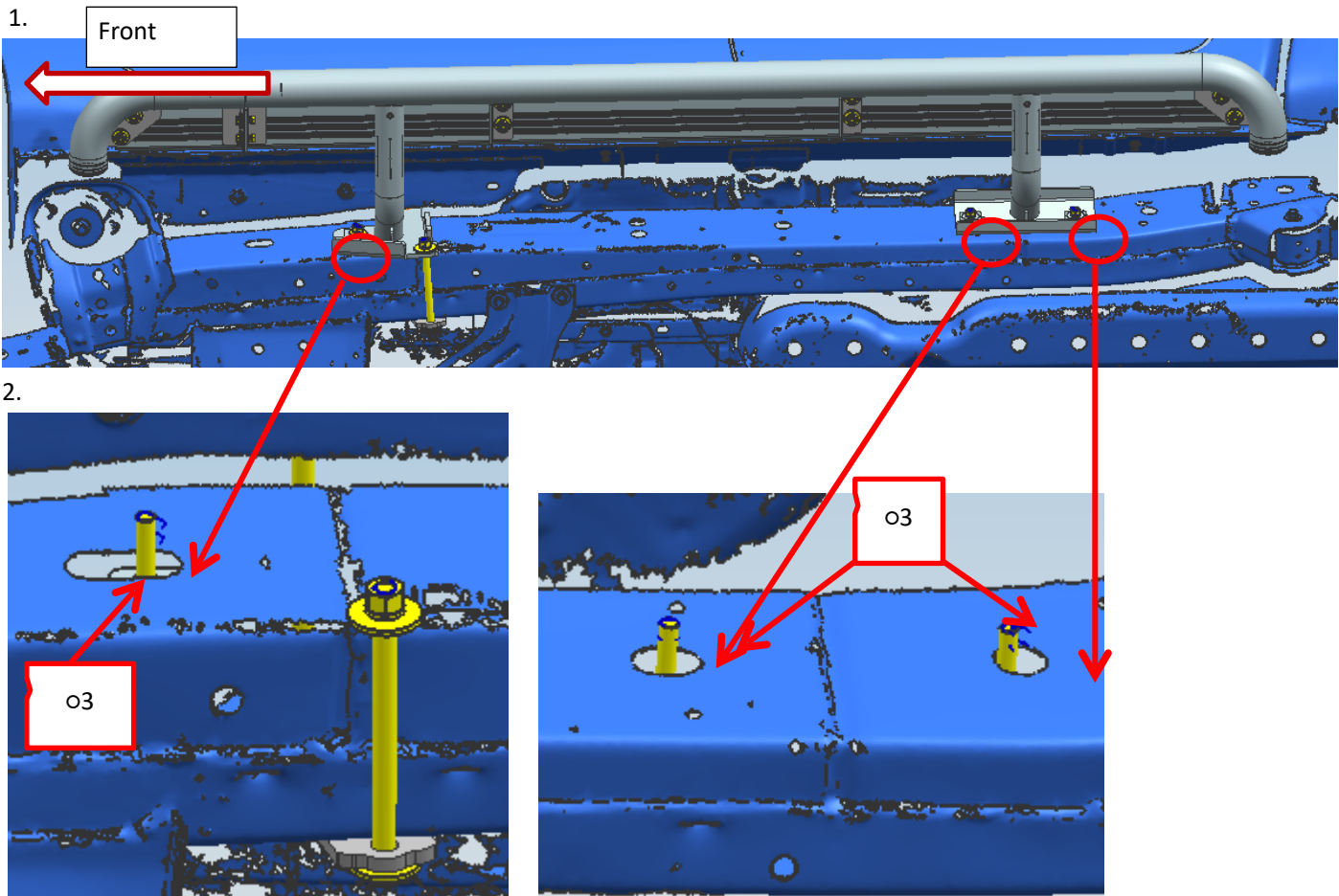
Hardware kit

Item	Item NO.	Description	Qty
o6	3005639	Hex bolt M12_160	4

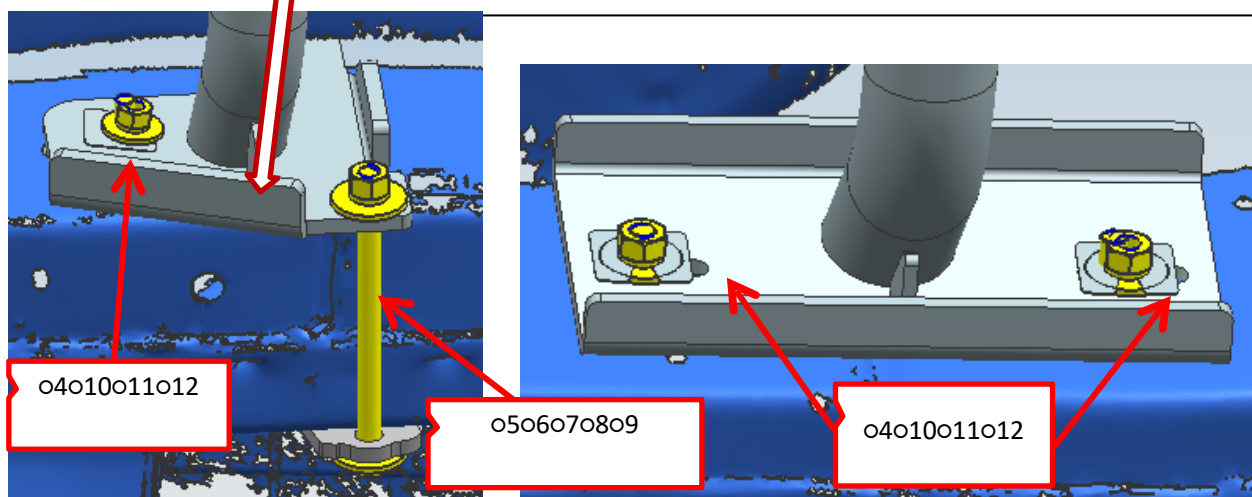
Fitting instruction

o7	3000171	Spring washer D12	4
o8	3000252	Flat washer D12(12x37x3mm)	6
o9	3001505	Hex nut M12	2
o10	3000160	Spring washer D10	6
o11	300245	Flat washer M10 (10x30x2.5mm)	6
o12	3001491	Hex nut M10	6

Fitting Instruction



Fitting instruction



1. Remove the zip tapes from the chassis and the chassis bolts. Keep the chassis bolts for future use.
2. Put o3 T-bolt M10x40 into the chassis holes and use M10 plastic clip to hold the T-bolt in place and prevent it from falling in to the chassis rail.
3. Fit the steps on o3, pre-fasten the step with o4 o10 o11 o12.
4. Use o5 o6 o7 o8 o9 to clamp the brackets to the chassis.
5. Adjust the step to a suitable position and securely fasten all bolts.